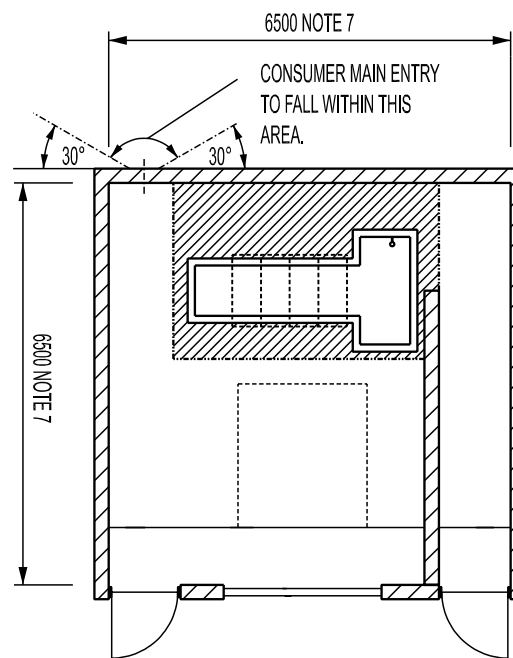
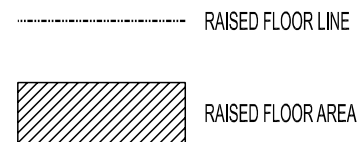


OPTION 1

SCALE 1:100

LEGEND

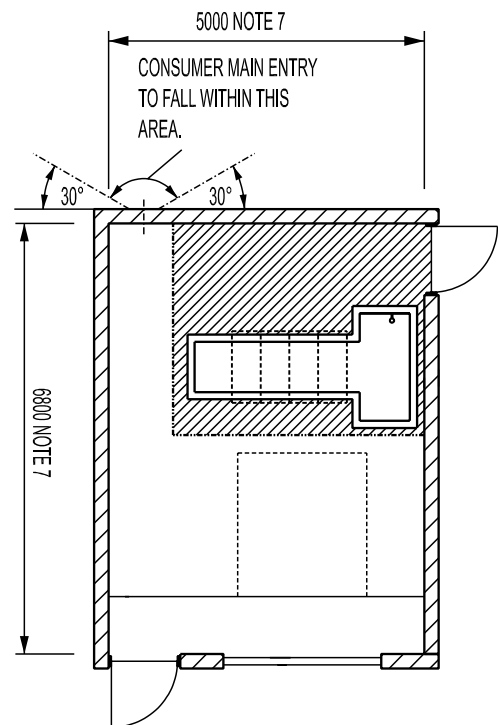


OPTION 2

SCALE 1:100

NOTE

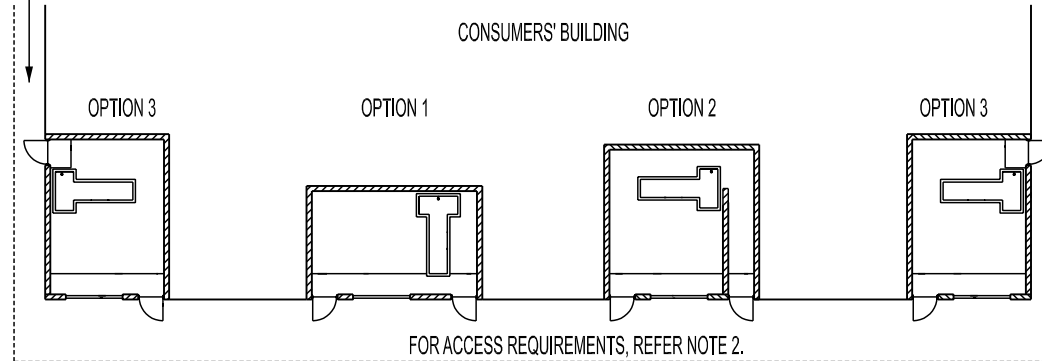
- PURPOSE OF OPTION PLAN**
THIS DRAWING ILLUSTRATES THE RANGE OF OPTIONS AVAILABLE FOR THIS TYPE OF SUBSTATION. ALL SUBSTATION PLANS CAN BE MIRROR-IMAGED TO SUIT THE CONSUMERS' BUILDING LAYOUT. REFERENCE SHOULD BE MADE TO THE DRAWINGS LISTED BELOW FOR CONSTRUCTION DETAILS AND TO THE PUBLICATION "ELECTRICITY SUPPLY TO LARGE CUSTOMERS" FOR ADDITIONAL INFORMATION.
- ACCESS**
UNLESS THE CHAMBER FRONTS ONTO THE STREET, AN ACCESS ROAD FOR HEAVY VEHICLES IS REQUIRED FROM THE STREET TO THE FRONT OF THE SUBSTATION CHAMBER. REFER TO THE PUBLICATION "ELECTRICITY SUPPLY TO LARGE CUSTOMERS" FOR ACCESS REQUIREMENTS.
- SITE**
THE GROUND BENEATH THE SUBSTATION IS REQUIRED TO ACCOMMODATE EARTHING ELECTRODES. IT MUST BE FREE OF ALL OBSTRUCTIONS, INCLUDING SEWERS, PIPES AND UNDERGROUND CONSTRUCTION.
- STEPS**
UP TO 3 STEPS, INCLUDING AN APPROPRIATE HANDRAIL MAY BE PROVIDED AT ANY PERSONNEL DOOR. IF STEPS ARE TO BE LOCATED WITHIN THE SUBSTATION CHAMBER, IT WILL BE NECESSARY TO EXTEND THE SUBSTATION CHAMBER TO ACCOMMODATE THE ENCROACHMENT OF THE STEPS SUCH THAT THE INTERNAL DIMENSIONS.
- SUBSTATION HEADROOM - 3000mm MINIMUM**
- DEPTH OF HV PIT - 900mm OF THE SUBSTATION CHAMBER ARE NOT REDUCED.**
- SUBSTATION DIMENSIONS WILL VARY DEPENDING ON THE LOCATION IN WHICH EQUIPMENT IS INSTALLED. THROUGHOUT THE SUBSTATION CHAMBER A MINIMUM OF 1000mm CLEAR OPENING SHALL BE PROVIDED FROM ANY STRUCTURE TO EQUIPMENT AND MINIMUM OF 900mm BETWEEN EQUIPMENT.**



OPTION 3

SCALE 1:100

PERSONNEL ACCESS
1200 WIDE



KEY DIAGRAM - PLAN VIEW

SCALE 1:300

INTERNAL FITOUT DETAILS	S02-02-07-50 S02-02-07-51
INDOOR SUBSTATION SURFACE CHAMBERS CONSTRUCTION NOTES	S02-02-07-00
ONE TRANSFORMER INDOOR SUBSTATION SURFACE CHAMBER - OPTION 3 CONSTRUCTION DETAILS	S02-02-07-19 S02-02-07-20 S02-02-07-21
ONE TRANSFORMER INDOOR SUBSTATION SURFACE CHAMBER - OPTION 2 CONSTRUCTION DETAILS	S02-02-07-16 S02-02-07-17 S02-02-07-18
ONE TRANSFORMER INDOOR SUBSTATION SURFACE CHAMBER - OPTION 1 CONSTRUCTION DETAILS	S02-02-07-13 S02-02-07-14 S02-02-07-15
REFERENCE DRAWING	DRWG. No.

4	TITLEBLOCK & DRAWING NUMBERS FORMATTED	K.T.	FEB'19	C.C.	C.C.
3	NOTE 7 AMENDED	I.B.	JAN'17	I.B.	B.C.
2	REFERENCE DRAWING NUMBERS UPDATED	I.B.	APR'16	I.B.	B.C.
1	NOTE 7 ADDED DRAWINGS S02-02-07-22 AND S02-02-07-23 REPLACED WITH S02-02-07-00	C.M.	DEC'13	A.T.	B.C.
NO	DESCRIPTION	DRN	DATE	CKD	APPD
AMENDMENTS					



DES	I.PURVES	POWER STANDARD DRAWING		
DRN	G.R./A.D.			
CKD	S.LEACH	INDOOR SUBSTATION ONE TRANSFORMER ARRANGEMENT SURFACE CHAMBER LAYOUT OPTIONS PLAN		
APPD	F.ROBSON			
SCALE	AS SHOWN	A3	DRAWING NUMBER	S02-02-07-12
ISSUED	MARCH'98			
ALL DIM.	IN mm	4		
DRAFTING STANDARD TO A.S.1100		CAD PRODUCT - DO NOT AMEND MANUALLY		