

REFERENCE DRAWING	
REFERENCE DRAWING	DRAWING No.
ONE TRANSFORMER INDOOR SUBSTATION - OPTION 1	
CONSTRUCTION DETAILS SHEET 1 OF 3	S02-02-07-13
CONSTRUCTION DETAILS SHEET 2 OF 3	S02-02-07-14
CONSTRUCTION DETAILS SHEET 3 OF 3	S02-02-07-15
INDOOR SUBSTATION SURFACE CHAMBER CONSTRUCTION NOTES	S02-02-07-00
INDOOR SUBSTATION SURFACE CHAMBER LOUVRED DOOR DETAILS	S02-02-07-02
INDOOR SUBSTATION SURFACE CHAMBER LV CONNECTION DETAIL	S02-02-07-48
INDOOR SUBSTATION EARTHING LAYOUT	S02-02-07-46
INDOOR SUB LV CABLE LADDER ARRANGEMENT	S02-02-07-47
INDOOR SUB EMERGENCY EXIT	S02-02-07-62
DRY TYPE TX LIFTING BEAM	S02-01-06-09
UPPER SUB BALUSTRADE DETAILS	S02-02-07-04

NOTES

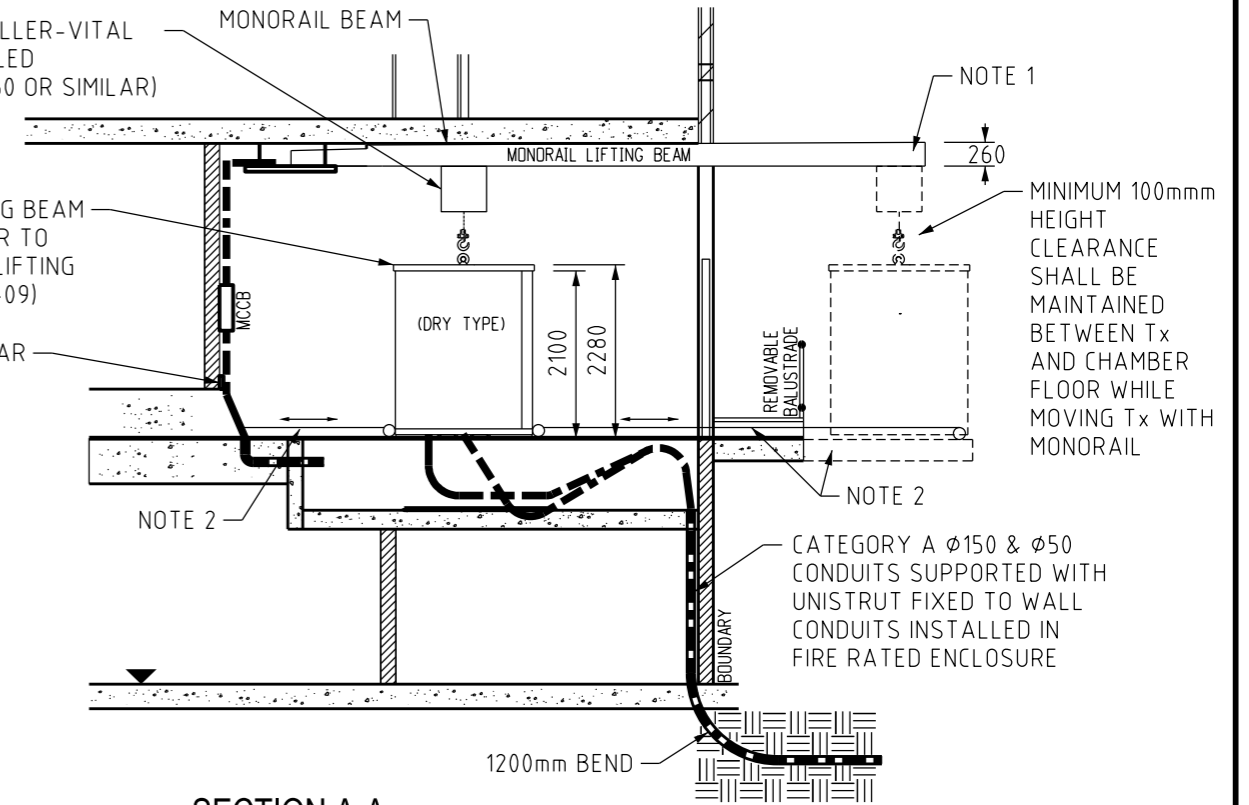
TRANSFORMER LIFTING OPTIONS

- PERMANENT MONORAIL AND TROLLEY SOLUTION REFER DESIGN STANDARDS FOR UPPER LEVEL SUBSTATION CHAMBERS SECTION 5.1 S02-04-03-01.
- LOADING PLATFORM AND PULLING RING & PULLEY REFER TO DESIGN STANDARDS FOR UPPER LEVEL SUBSTATION CHAMBERS SECTION 5.1 AND 5.3 S02-04-03-01. SUITABLE FOR "BI-DIRECTIONAL MOVEMENT OF EQUIPMENT".

LOW HEADROOM PUSHGIRDER TROLLER-VITAL HAND CHAIN BLOCK CLOSED COUPLED SUSPENSION (HARRINGTON-SHB050 OR SIMILAR)

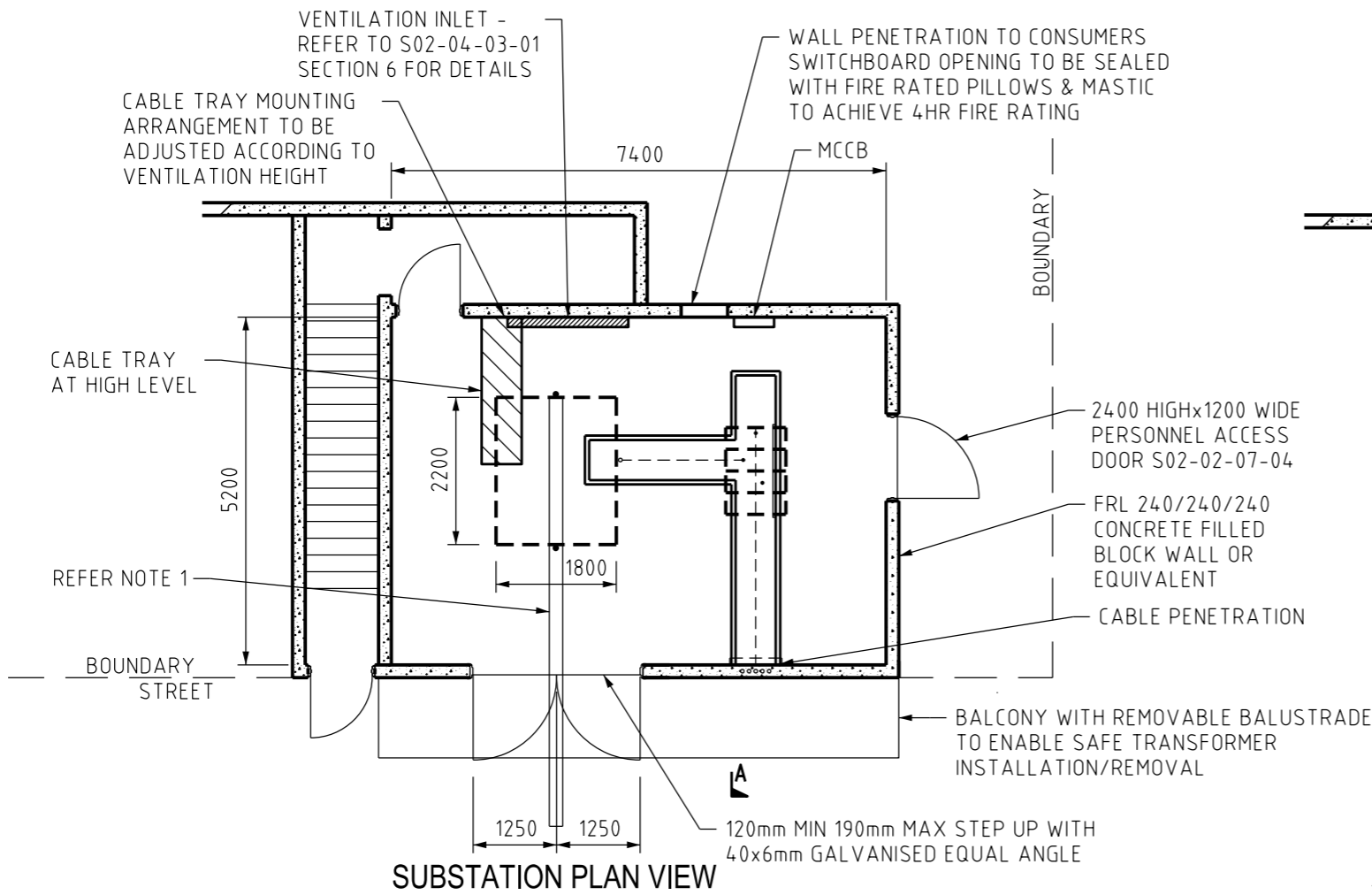
CUSTOM BUILT 125UC LIFTING BEAM BOLTED ON TO TRANSFORMER TO SUIT SINGLE CENTRALISED LIFTING ARRANGEMENT (S02-01-06-09)

M.E.N. EARTH BAR



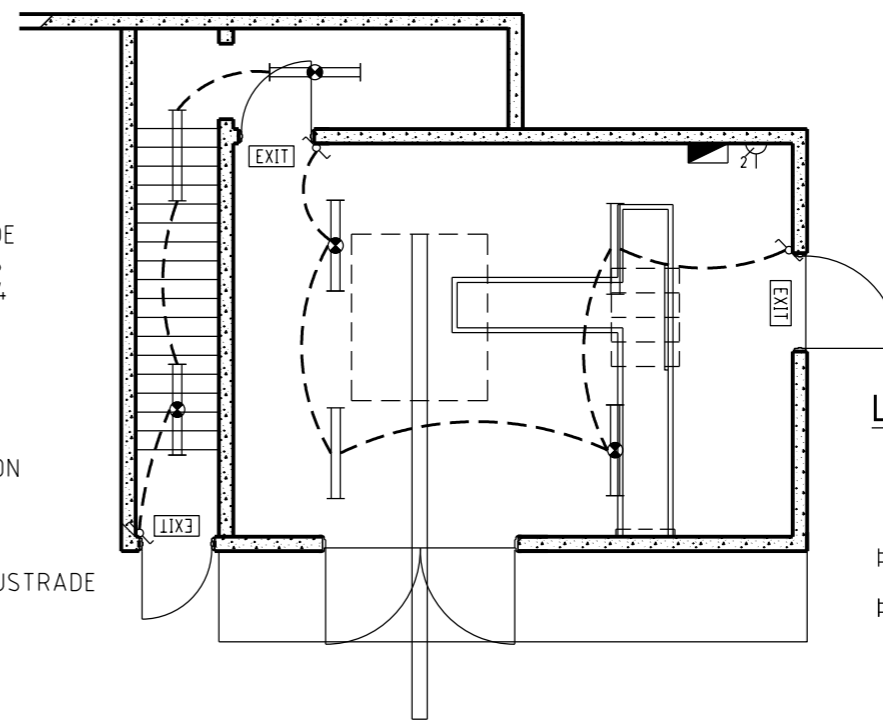
SECTION A-A

N.T.S.



SUBSTATION PLAN VIEW

N.T.S.



SUBSTATION LIGHTING & POWER LAYOUT

N.T.S.

LEGEND OF SYMBOLS

- SWITCHBOARD
- 10A DOUBLE GPO
- 2x36W FLUORESCENT
- 2x36W EMERGENCY FLUORESCENT
- EXIT SIGN
- LIGHT SWITCHES CLIPSAL 56SWT216 SURFACE SWITCH WITH TIMER

NO	DESCRIPTION	DRN	DATE	CKD	APPD
2	CORRECTED SPELLING MISTAKES.	CC.	FEB'21	B.V.	B.C.
1	TITLEBLOCK & DRAWING NUMBERS FORMATTED	K.T.	FEB'19	CC	CC.
0	ISSUED FOR INFORMATION	K.T.	JUN'17	I.B.	B.C.
AMENDMENTS					



DES		POWER STANDARD DRAWING	
DRN	K.TAVENER	UPPER LEVEL SUBSTATION CHAMBERS SINGLE TRANSFORMER ARRANGEMENT EXAMPLE	
CKD	I.BASHIR	A3	DRAWING NUMBER S02-02-07-64
APPD	B.CHEUNG	CAD PRODUCT - DO NOT AMEND MANUALLY	
SCALE	AS SHOWN	AMDT	
ISSUED	JUN 2017		
ALL DIM. IN mm			
DRAFTING STANDARD TO A.S.1100			