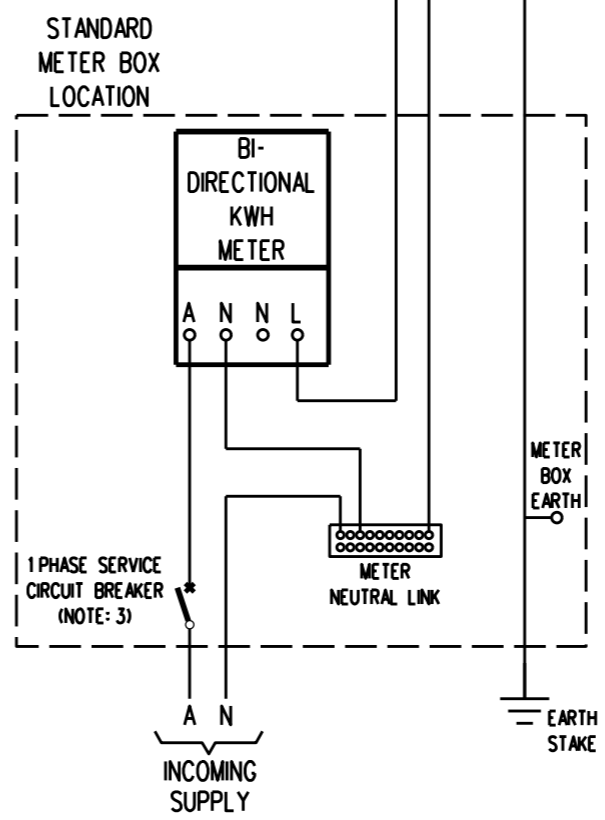
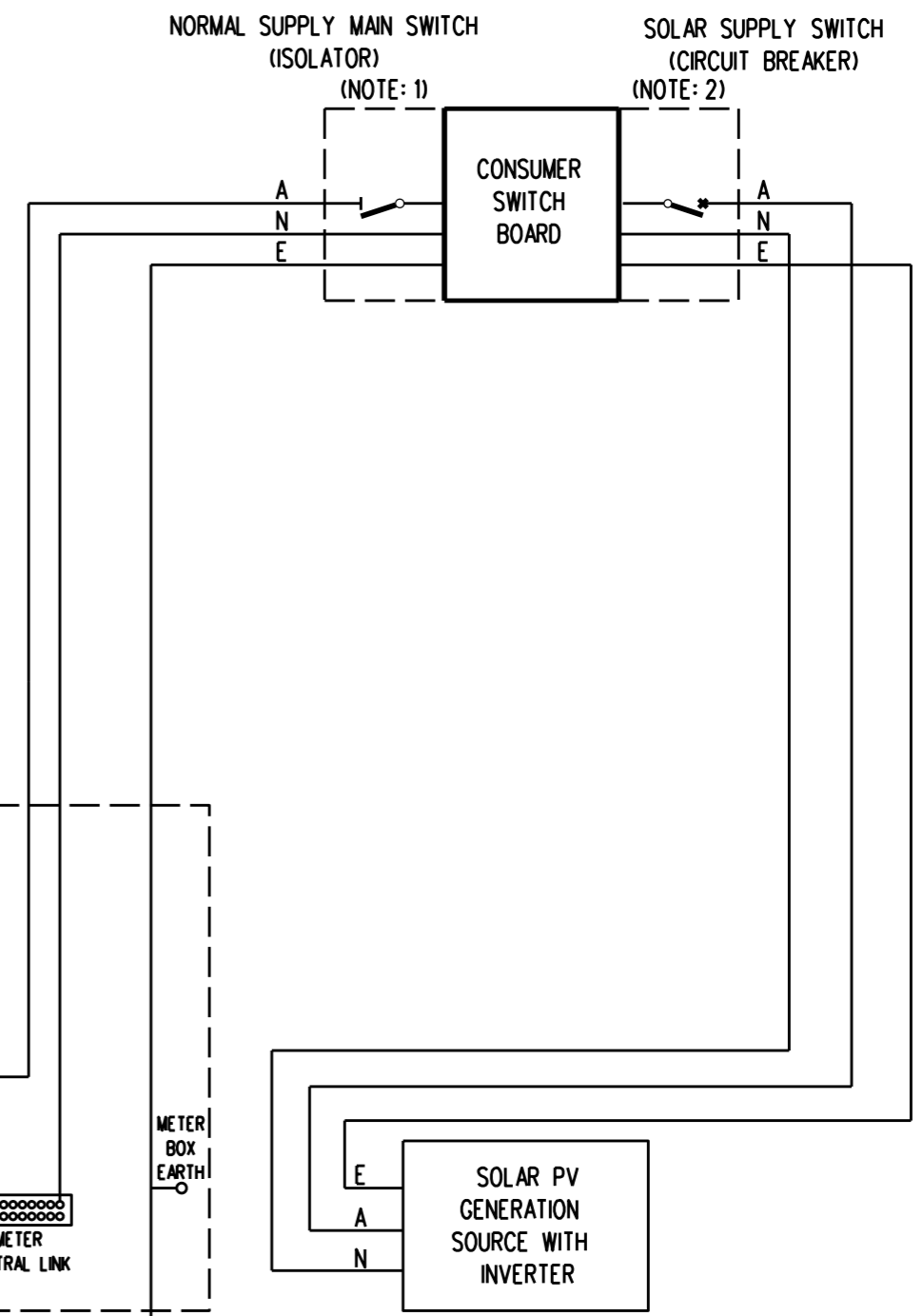
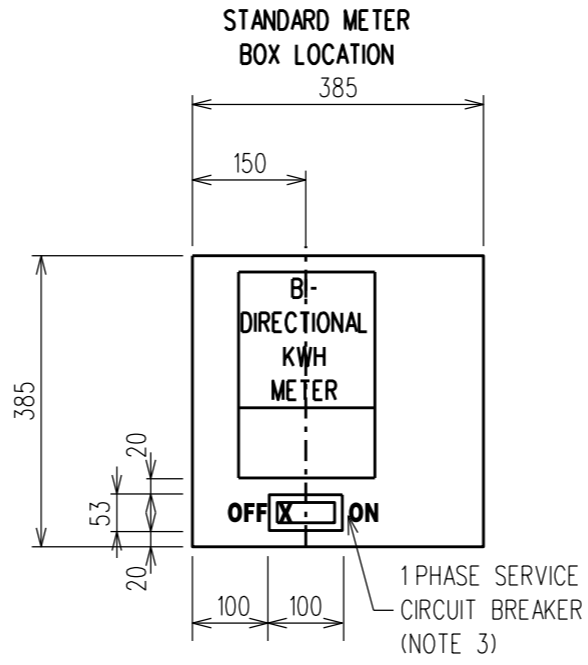


NOTES :

1. THE SOLAR SUPPLY ISOLATORS SHALL HAVE IN BUILT PROVISION TO BE LOCKABLE IN THE "OFF" POSITION.
2. THE CIRCUIT BREAKERS SHALL HAVE IN BUILT LOCKING PROVISIONS TO BE LOCKABLE IN THE "OFF" POSITION.
3. SINGLE PHASE SERVICE PADLOCKABLE CIRCUIT BREAKER WITH SEALABLE ENCLOSURE.
4. LABELLING ON THE INSTALLATION AND SWITCHBOARD SHALL BE DONE AS PER THE SIGNAGE REQUIREMENTS MENTIONED IN THE PV DOCUMENTS NO.1 AND 2 NOTED.
5. ALL CUSTOMERS WIRING AFTER LOAD SIDE OF THE METER POINT SHALL COMPLY TO AS3000 AT ALL TIMES AND AS3010 WITH A CHANGEOVER SWITCH WHEN ADDITIONAL GENERATION IS INSTALLED.
6. THE EARTH CABLE FROM THE EARTH STAKE TO THE CONSUMERS SWITCHBOARD EARTH BAR SHALL BE CONTINUOUS AND UNBROKEN. THE EARTH CABLE SHALL BE CONNECTED TO THE METER BOX EARTH BY EXPOSING A SECTION OF THIS CABLE AND JOINING A CONNECTING CABLE BY AN ACCEPTED METHOD INCLUDING SOLDERING OR USE OF AN EARTH BLOCK. THE METER BOX EARTH POINT SHALL NOT BE USED AS A JUNCTION POINT AND ONLY SERVES AS A PURPOSE TO EARTH THE CABINET.



SCHEMATIC FOR TYPE - 2 SINGLE PHASE

THIS DRAWING IS TO BE READ IN CONJUNCTION WITH THE FOLLOWING POWER AND WATER DOCUMENTS.
 1. REQUIREMENTS FOR GRID CONNECTION OF PHOTOVOLTAIC SYSTEMS VIA INVERTERS
 2. CHAPTER 10 OF THE METERING MANUAL: "SMALL SCALE PARALLEL CUSTOMER GENERATION (VIA INVERTERS)"

NO	DESCRIPTION	DRN	DATE	CKD	APPD
5	UPDATE EARTHING NOTES	CWM	OCT'20	B.V.	L.H.
4	REMOVED PV METER AND NOTE 5 AMENDED	C.M.	MAR'15	A.T.	B.C.
3	CHANGES IN NOTES	C.M.	JUL'12	B.N.	B.C.
2	CHANGES IN NOTES	C.M.	AUG'10	B.N.	B.C.
1	CHANGES IN NOTES	C.M.	JUL'10	B.N.	B.C.
0	APPROVED FOR INSTALLATION	C.M.	APR'10	B.N.	B.C.
A	ISSUED FOR COMMENT	C.M.	FEB'10	B.N.	B.C.
AMENDMENTS					



DES	B.N.
DRN	C.M.
CKD	B.N.
APPD	B.C.
SCALE	NTS
ISSUED	APR'10
ALL DIM. IN mm	A3
DRAFTING STANDARD TO A.S.1100	

GENERAL SCHEMATIC FOR PV INSTALLATIONS - TYPE 2. SINGLE PHASE CUSTOMER

DRAWING NUMBER S11-02-07-49

CAD PRODUCT - DO NOT AMEND MANUALLY

