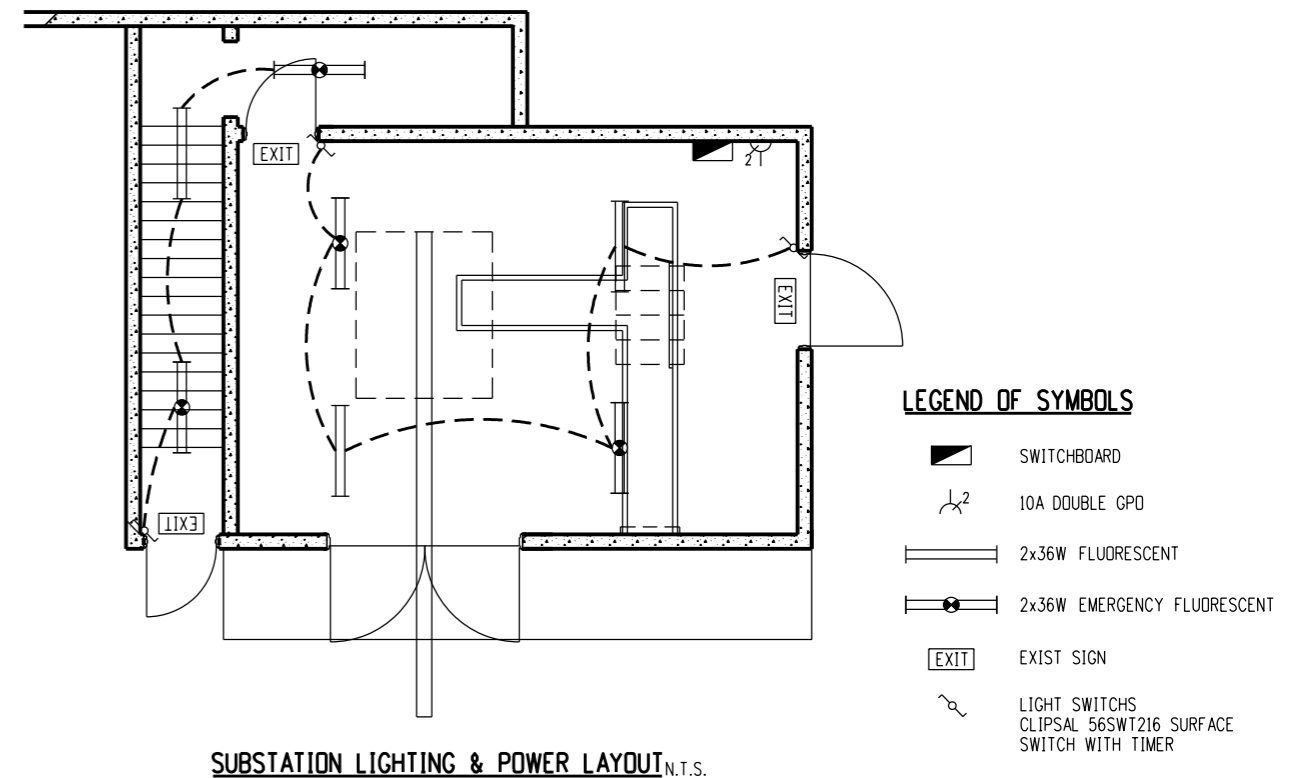
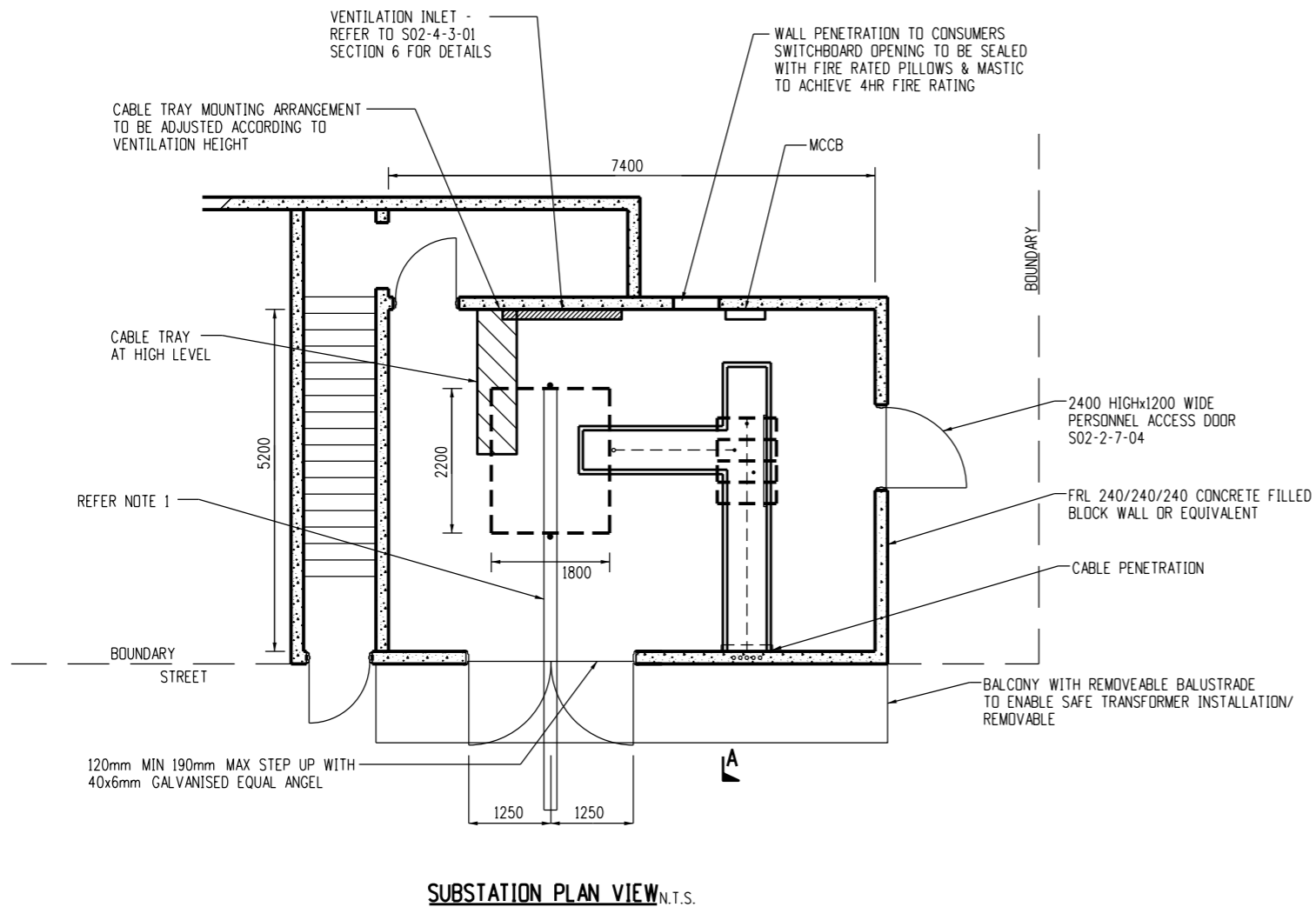
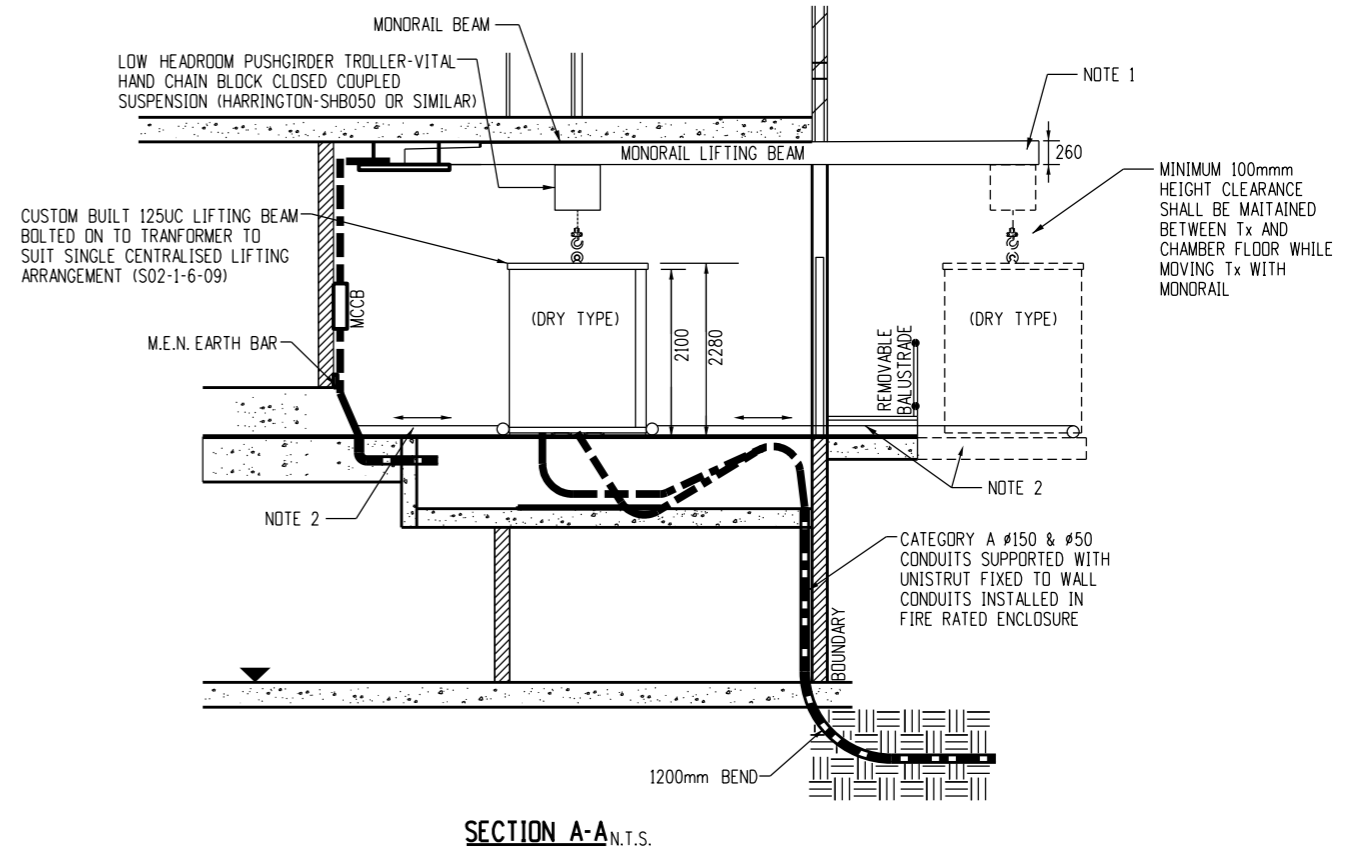


REFERENCE DRAWING	
REFERENCE DRAWING	DRAWING No.
ONE TRANSFORMER INDOOR SUBSTATION - OPTION 1	
CONSTRUCTION DETAILS SHEET 1 OF 3	S2-2-7-13
CONSTRUCTION DETAILS SHEET 2 OF 3	S2-2-7-14
CONSTRUCTION DETAILS SHEET 3 OF 3	S2-2-7-15
INDOOR SUBSTATION SURFACE CHAMBER CONSTRUCTION NOTES	S2-2-7-00
INDOOR SUBSTATION SURFACE CHAMBER LOUVRED DOOR DETAILS	S2-2-7-2
INDOOR SUBSTATION SURFACE CHAMBER LV CONNECTION DETAIL	S2-2-7-3
INDOOR SUBSTATION SURFACE CHAMBER LV CONNECTION DETAIL	S2-2-7-48
INDOOR SUBSTATION SURFACE CHAMBER LV CONNECTION DETAIL	S2-2-7-49
INDOOR SUBSTATION EARTHING LAYOUT	S2-2-7-46
INDOOR SUB LV CABLE LADDER ARRANGEMENT	S2-2-7-47
INDOOR SUB EMERGENCY EXIT	S2-2-7-62
DRY TYPE TX LIFTING BEAM	S02-2-7-04
UPPER SUB BALUSTRADE DETAILS	S02-1-6-09
UPPER SUB BALUSTRADE DETAILS	S02-2-7-64

NOTES

TRANSFORMER LIFTING OPTIONS

1. PERMANENT MONORAIL AND TROLLEY SOLUTION REFER DESIGN STANDARDS FOR UPPER LEVEL SUBSTATION CHAMBERS SECTION 5.1 S02-4-3-01.
2. LOADING PLATFORM AND PULLING RING & PULLEY REFER TO DESIGN STANDARDS FOR UPPER LEVEL SUBSTATION CHAMBERS SECTION 5.1 AND 5.3 S02-4-3-01. SUITABLE FOR "BI-DIRECTIONAL MOVEMENT OF EQUIPMENT".



NO	DESCRIPTION	DRN	DATE	CKD	APPD
0	ISSUED FOR INFORMATION	K.T.	JUN '17	I.B.	B.C.
AMENDMENTS					



DES	...
DRN	K.TAVENER
CKD	I. BASHIR
APPD	B. CHEUNG
SCALE	AS SHOWN
ISSUED	JUN 2017
ALL DIM. IN	mm
DRAFTING STANDARD TO A.S.1100	

UPPER LEVEL SUBSTATION CHAMBERS SINGLE TRANSFORMER ARRANGEMENT EXAMPLE	
A3	DRAWING NUMBER S02-2-7-64
CAD PRODUCT - DO NOT AMEND MANUALLY	

