

Howard East Borefield upgrade

Power and Water Corporation is working to ensure the sustainability and security of the Darwin region water supply. As part of the [Darwin Region Water Supply Strategy](#), Power and Water is equipping four existing bores within the Howard East Borefield to increase emergency supply capacity.

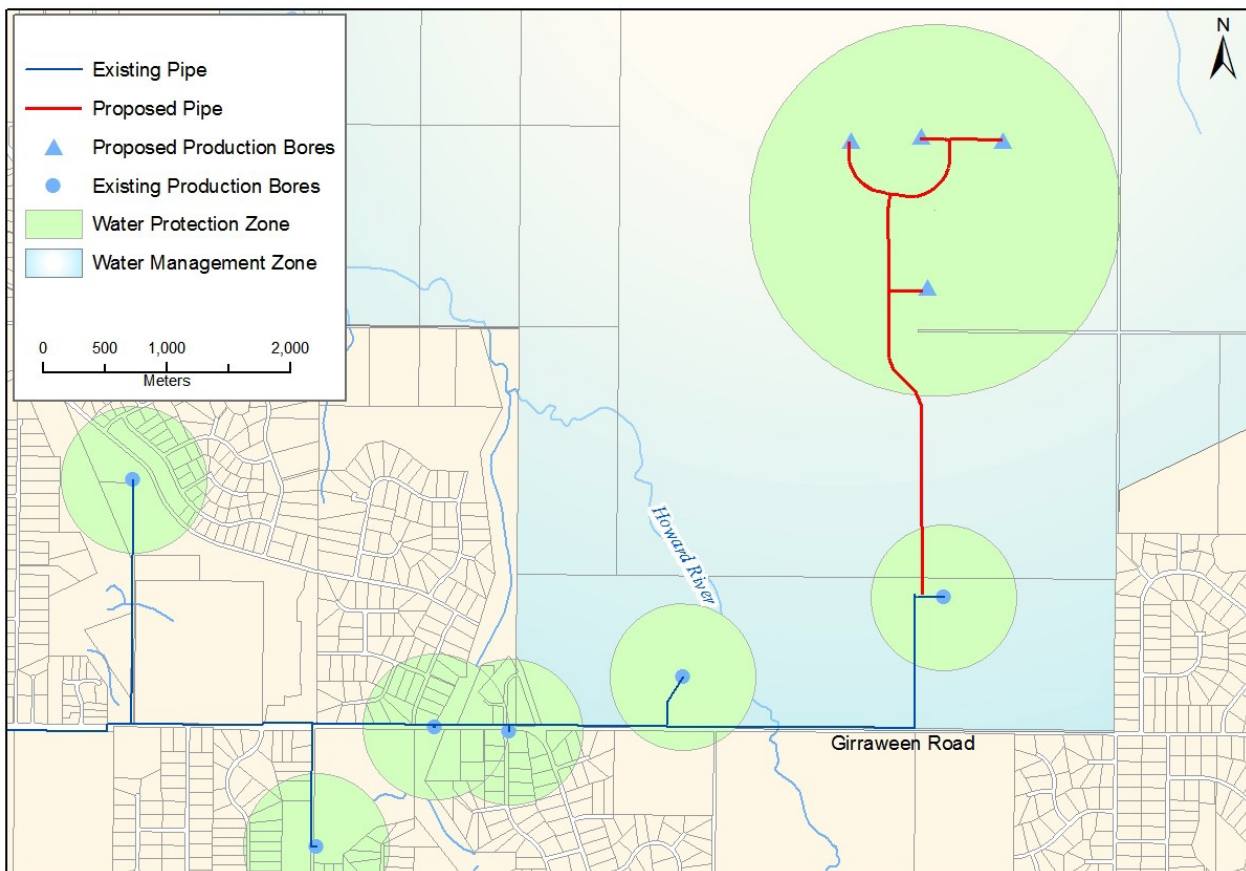
Importantly, Power and Water is not seeking to increase its existing annual groundwater licence extraction volume as granted by the Department of Land Resource Management.

Why are we enhancing the borefield?

The Darwin region is heavily reliant on a single water supply source, the Darwin River Dam. If for any reason this source was unavailable, the region would depend on groundwater from its borefields for emergency supply. Enhancing the capacity of the borefield means the Darwin region will have access to an adequate emergency supply.

Where are the bores located?

The bores are located east of the Howard River within a Water Management Zone. They were drilled in the 1980s in preparation for future connection.



What impact will the project have on residents?

The construction program is being carefully managed to ensure minimal impact to the local community. There may be some increased traffic on local roads during construction from May to December 2015.

The project is expected to be completed by February 2016.

More information

Phone: Martin Loiperserberger on 8985 7167

Email: martin.loiperseberger@powerwater.com.au

Web: powerwater.com.au/howardeast

For more information on the Darwin Region Water Supply Strategy, please visit www.powerwater.com.au