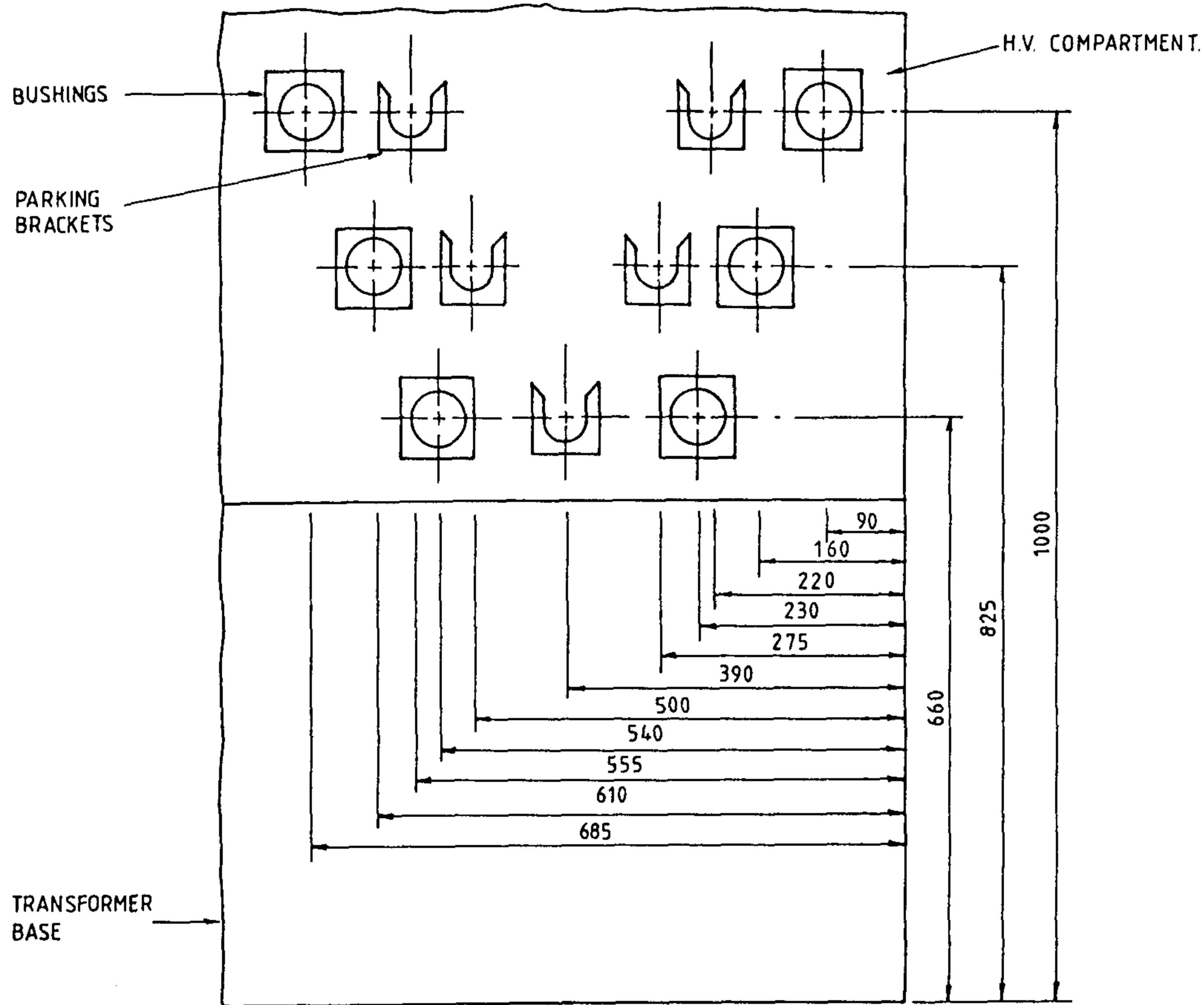
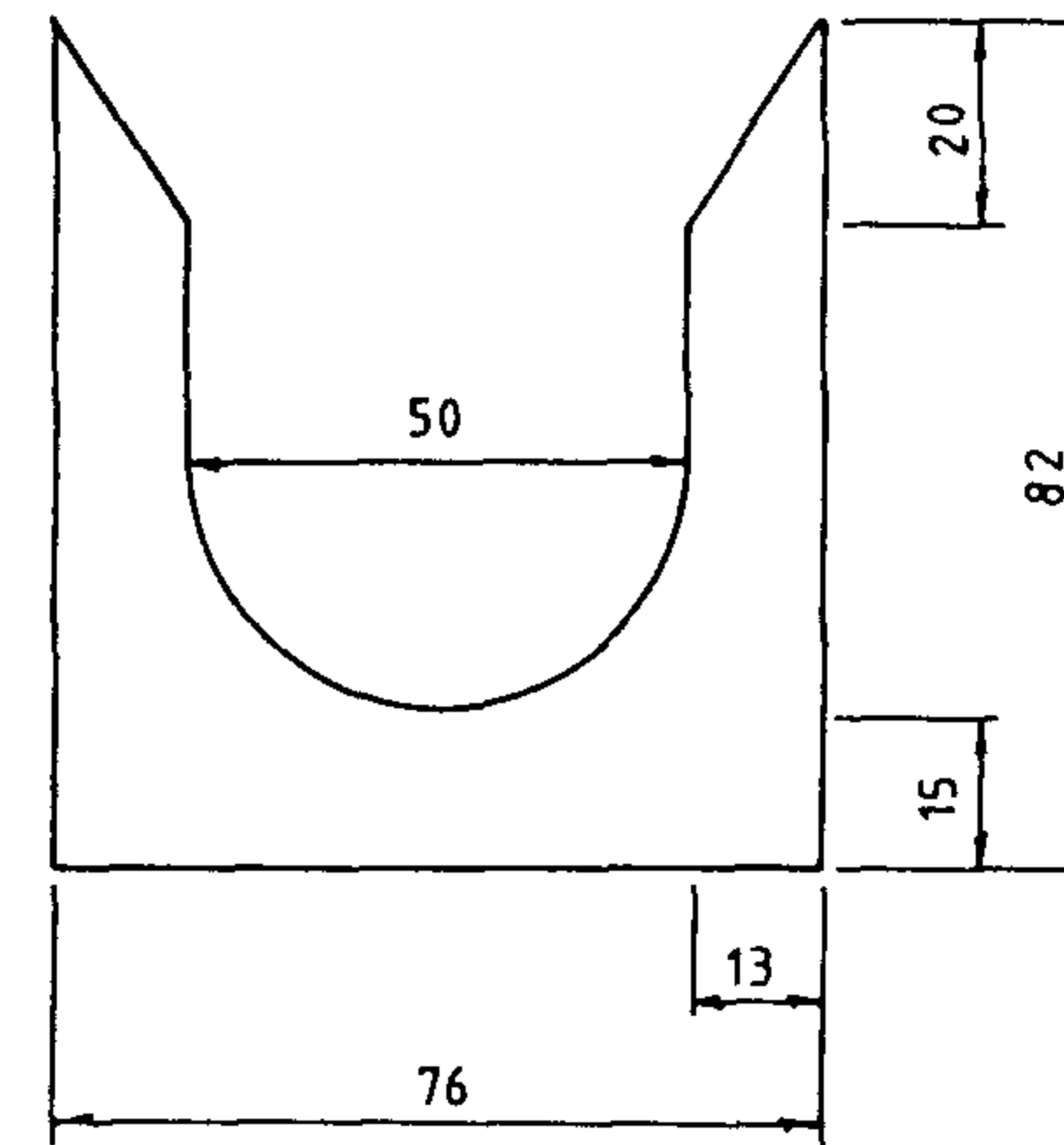


3RD ANGLE — DO NOT SCALE — REPORT ANY ERRORS, OMISSIONS TO DRAFTING OFFICE



- NOTES: 1. BUSHINGS TO BE SUITABLE FOR USE WITH R.T.E. S.B.T. LOADBREAK ELBOW.  
 2. PARKING BRACKETS TO BE SUITABLE FOR USE WITH R.T.E. FEED THROUGH DEVICE.  
 3. HORIZONTAL SEPERATION OF SUBSTATION H.V. DOOR AND FRONT END OF H.V. BUSHING TO BE  $2.50 \pm 10\text{mm}$

PARKING BRACKET



No.	AMENOMENT	DATE	INIT.	APP'D.
3	TITLE & Drg NUMBER CHANGED	5/88	QI	
2	INDEX NO ALTERED	9/85	CP	
1	REDRAWN & REVISED	1/85	TR	

**POWER AND WATER AUTHORITY**



POWER DIRECTORATE

DES J.HASSANEN	NT STANDARD DRAWING	
DRN E.S.TULLY	TITLE SUBSTATIONS	
CKD <i>[Signature]</i>	HV BUSHING & PARKING BRACKETS	
APPD <i>[Signature]</i>	GENERAL ARRANGEMENT	
ISSUED 4.2.88	A3	DRAWING NUMBER S2-1-7-3
DRAFTING STANDARD TO AS 1100		
ALL DIM. IN mm	SCALE NOT TO SCALE	SHEET

3

AMDT.