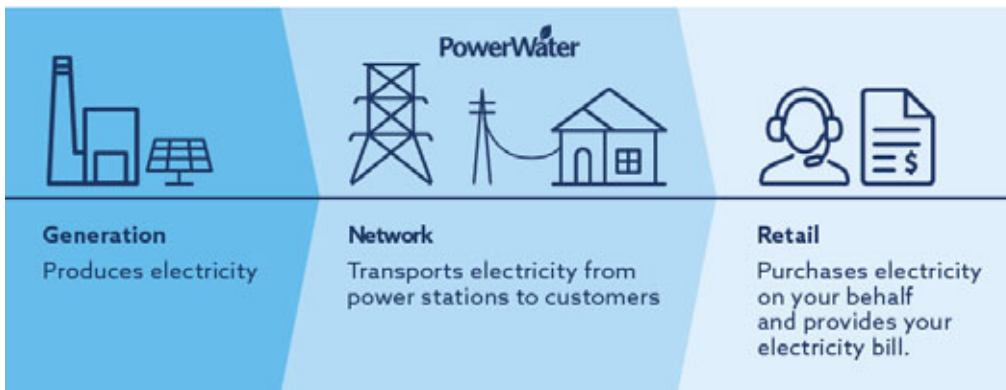




# The electricity supply chain

The image below illustrates the main components of the electricity supply chain.



**Electricity generators** produce electricity in bulk to meet the demand of the end consumer.

**Network distributors** deliver electricity to the end consumer. Power and Water transport electricity from generation plants to homes and businesses. We are responsible for building and maintaining the local network of electricity poles and wires.

**Retailers** are the customer facing 'shop front' of the electricity supply chain. They purchase electricity in bulk from generators and turn it into a range of retail products to meet customers' needs.

## Power and Water's role in electricity supply

Power and Water owns, operates and maintains the transmission and distribution networks comprising poles, wires, substations and other electricity infrastructure. It responds to outages and ensures that customers have a reliable source of electricity. In total, we service around 80,000 customers across the Territory – the map on the right shows our transmission (blue) and distribution (red) lines.

## The need for long term planning

The electricity network services Power and Water provides are regulated by the Australian Energy Regulator which seeks to ensure the prices we charge are appropriate and in line with other Australian Network Distributors.

Power and Water's Power Networks division is required to submit a regulatory proposal to the Australian Energy Regulator outlining the tariffs we propose to charge customers from 2019 to 2024. The Australian Energy Regulator will consider this proposal and determine how much revenue Power Networks can recover through network tariffs to run an efficient business, maintain the network and provide the services that customers expect.

## More information

For more information go to [powerwater.com.au/powernetworks](http://powerwater.com.au/powernetworks)

