

NOTES

1. METALLIC PILLAR BASE REQUIRES A EARTH CONNECTION TO THE NEUTRAL BAR. ENSURE ATTACHMENT POINT IS CLEAR OF PAINT AND DIRT.
2. NEUTRAL BUS BAR IS LOCATED INSIDE PILLAR

ITEM NO	DESCRIPTION	STOCK CODE
3	5 SLOT STRIPPLE FUSE PILLAR INCLUDES BUS BAR OFFSET KIT	415012
2	STAINLESS STEEL 5 SLOT BASE ADAPTOR	415011
1	EXISTING PREGNANT PILLAR FOUNDATION	N/A

MATERIAL SCHEDULE

NO	DESCRIPTION	DRN	DATE	CKD	APPD
0	ISSUED FOR CONSTRUCTION	C.C.	APR'12	B.C.	B.C.
AMENDMENTS					



DES	B.C.
DRN	C.C.
CKD	B.C.
APPD	B.C.
SCALE	N.T.S.
ISSUED	FEB'12
ALL DIM. IN	mm
DRAFTING STANDARD TO A.S.1100	

POWER STANDARD DRAWING	
<b>5 SLOT FUSED DISTRIBUTION PILLAR FOR PREGNANT PILLAR REPLACEMENT SHEET 1 OF 2</b>	
A3	DRAWING NUMBER S03-1-6-05_1
CAD PRODUCT - DO NOT AMEND MANUALLY	



### INSTALLATION METHOD

ONCE THE SITE HAS BEEN PREPARED BY CIVIL CONTRACTORS, THE FOUNDATION OF THE PREGNANT PILLAR EXPOSED AND THE NEW RAG BOLT FOR THE REPOSITION STREETLIGHT POLE INSTALLED.

PWC WILL COMMENCE IN DECOMMISSIONING THE OLD PILLAR. THE ENTIRE PILLAR MUST BE DE-ENERGISED AND PROVEN DE-ENERGISED BEFORE COMMENCING ANY WORK ON THE LV SWITCHBOARD

ALL WORK ASSOCIATED SHALL BE CARRIED OUT IN ACCORDANCE WITH THE REQUIREMENTS OF PWC SAFETY RULES.

APPROPRIATE PERSONAL PROTECTIVE EQUIPMENT (PPE), TOOLING AND CONTROL MEASURES SHALL BE USED.

BY USING THE CUSTOM MADE BASE ADAPTOR (ITEM 02). PWC STAFF SHALL ATTEMPT TO RETROFIT THE BASE TO THE EXISTING RAG BOLT FOUNDATION.

THE NEW PILLAR BASE SHOULD HAVE A MINIMUM IN GROUND DEPTH OF 100-200MM TO ENSURE NO SURROUNDING DIRT CAN ENTER THE BASE AFTER INSTALLATION.

ONCE THE PILLAR BASE AND FOUNDATION HAS BEEN FITTED IN PLACE, THE REST OF THE WORK WOULD BE AS ANY OTHER GENERAL PILLAR CONSTRUCTION PROCEDURES I.E. EXTEND CABLES, LUG AND RE-TERMINATE, ETC.

BOLLARDS SHALL BE INSTALLED TO PREVENT DAMAGE IN LOCATIONS WHERE PILLARS ARE CLOSE TO DRIVEWAYS OR OTHER AREAS WHERE DAMAGE COULD OCCUR BY IMPACT. REFER TO DRAWING S02-2-6-28.

### RESTORATION OF SURFACES AFTER INSTALLATION OF PILLAR AND POLE

GROUND SURFACES WHICH HAVE BEEN DISTURBED DURING EXCAVATION OF POLE HOLES AND DURING INSTALLATION OF POLES MUST BE RESTORED. METHODS ADOPTED FOR BACKFILLING AND RESTORING EXCAVATED AREAS AROUND POLES MUST ACHIEVE A CLEAN AND TIDY RESULT. THIS WILL REDUCE THE NUMBER OF CUSTOMER COMPLAINTS.

TO PREVENT DANGER TO THE PUBLIC, BARRICADES MUST BE PLACED AT SITES WHERE POLES HAVE BEEN REMOVED OR CUT OFF, UNTIL THE SURFACES ARE RESTORED

### POLE RELOCATION

POWER SUPPLY TO THE RELOCATED STREETLIGHT SHALL BE PROVIDED BY THE NEWLY INSTALLED PILLAR VIA A 160A SERVICE BASE. LABELS AND MARKINGS SHALL BE USED ON BOTH THE CABLE AND FUSE BASE TO CORRECTLY IDENTIFY THE STREETLIGHT AND CONSUMERS FEED.

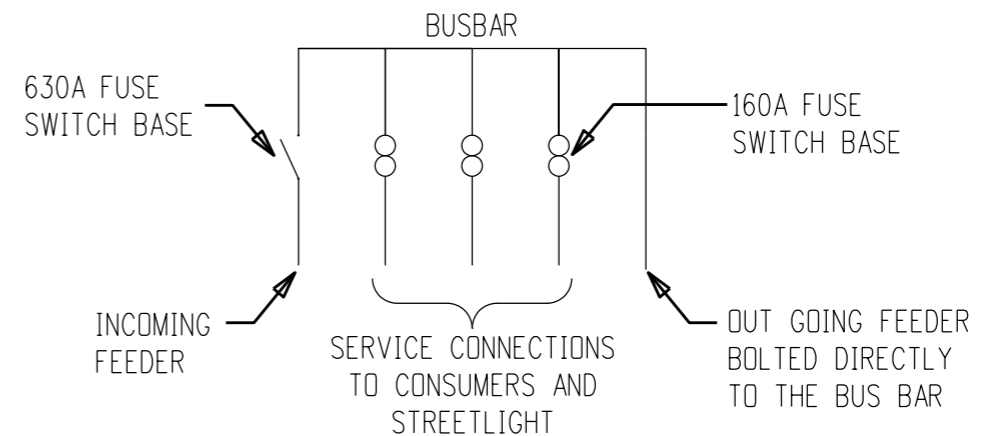
BEFORE RELOCATION, ALL POLES SHALL BE INSPECTED AND FOUND TO BE FREE FROM ANY DEFECTS SUCH AS GENERAL TRANSPORT DAMAGE, DENTS, SURFACE CRACKS OR COATING DEFECTS. SHOULD THERE BE DAMAGE TO THE GALVANISED COATING OF THE POLE THE EXPOSED AREA WILL BE TREATED BY HAND PAINTING WITH GALMET OR EQUIVALENT.

APPROPRIATE LIFTING SLINGS SHOULD BE USED WHEN HANDLING A STEEL POLE SUCH AS POLE STROP SLINGS OR SYNTHETIC SLINGS SO AS NOT TO DAMAGE THE PROTECTIVE COATING.

ONCE THE POLE HAS BEEN RELOCATED, PWC STAFF TO COMMISSION THE STREETLIGHT.

### SINGLE LINE DIAGRAM

### FUSED RESIDENTIAL PILLAR



NO	DESCRIPTION	DRN	DATE	CKD	APPD
0	ISSUED FOR CONSTRUCTION	C.C.	APR'12	B.C.	B.C.
AMENDMENTS					



DES	B.C.	POWER STANDARD DRAWING		
DRN	C.COPPINS	<b>5 SLOT FUSED DISTRIBUTION PILLAR FOR PREGNANT PILLAR REPLACEMENT SHEET 2 OF 2</b>		
CKD	B.C.			
APPD	B.C.			
SCALE	FEB'12			
ISSUED	N.T.S.	A3	DRAWING NUMBER	S03-1-6-05_2
ALL DIM. IN	mm			
DRAFTING STANDARD TO A.S.1100		CAD PRODUCT - DO NOT AMEND MANUALLY		AMDT