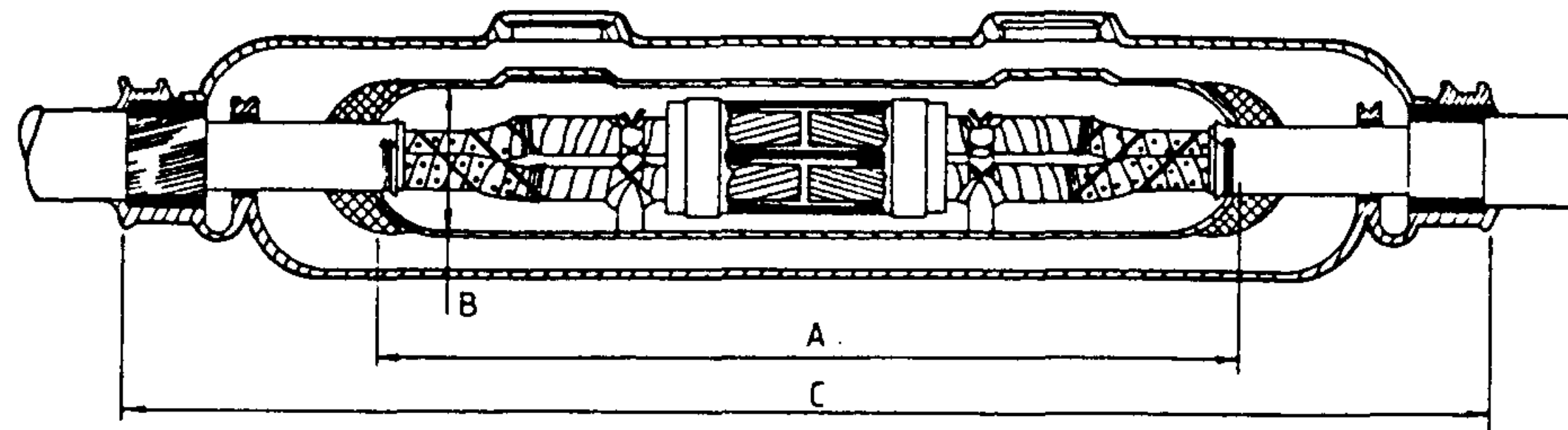


3RD ANGLE -- DO NOT SCALE -- REPORT ANY ERRORS, OMISSIONS TO DRAFTING OFFICE

	SIZE	ITEM	HENLEY N°	BICC N°
22 kV	25 mm ²	J/BOX	31113	
		L/S	31126	
		J/M	31091	
	120 mm ²	J/BOX	31114	
		L/S	31128	
		J/M	31093	
240 mm ²	J/BOX	31116		
	L/S	63306		
	J/M			
11kV	400 mm ²	J/BOX	31115	C70182-63
		L/S	31129	C73033-77
		J/M	31094	C73033-77



	SIZE	TYPE	ITEMS	ITEM	STOCK CODE	DIM. A	DIM. B	DIM. C	WIDTH	DEPTH
22kV	240mm	COMPLETE	CAST IRON BOX, SLEEVE and IMPREGNATED JOINTING MATERIAL.	1	16055					
	25mm	COMPLETE	CAST IRON BOX, SLEEVE and IMPREGNATED JOINTING MATERIAL.	2	7815	571	102	921	200	178
	120 mm	COMPLETE	CAST IRON BOX, SLEEVE and IMPREGNATED JOINTING MATERIAL	3	7823	622	114	1060	235	213
11kV	400 mm	COMPLETE	CAST IRON BOX, LEAD SLEEVE C/W SPREADER	4	7807	800	140	1130	225	225

NOTE 'CROSSED CORES'

1. The straight-through joints for use at 11 KV / 22 KV allow colour jointing provided that the cables are pulled in, in the same direction. If cables have to be pulled in, in opposite directions however, this will involve crossing of cores in order to obtain colour jointing and larger sizes of lead sleeves and protection boxes would be required.
2. This joint for use with both copper and aluminium conductors to B.S.6480-1969 (Metric) and B.S.480.
3. The joint will have cast iron box, lead sleeve and paper impregnated paper separator.
4. Materials.

Box - Cast Iron.
Sleeve - Lead
Separator - Paper impregnated.

				<p>POWER AND WATER AUTHORITY</p> <p>POWER DIRECTORATE</p>		DES R HAIGH		N.T. STANDARD DRAWING	
						DRN E.S.TULLY		TITLE CABLE JOINTING & TERMINATIONS	
						CKD <i>Kyobit</i> 27/4/11		JOINT-COPPER-3 CORE	
						APPD <i>WJW</i>		11KV/22KV-SCREENED PAPER LEAD	
				ISSUED 7/11/85		DRAWING NUMBER S2-1-2-1			
				DRAFTING STANDARD TO AS 1100		A3			
				ALL DIM IN mm		SCALE NTS			
						SHEET			
						AMDT.			
4	TITLE & Drg NUMBER CHANGED. TABLE CHANGED.			5/88	QW.				
NO	DESCRIPTION			DATE	INTL				
	AMENDMENTS								