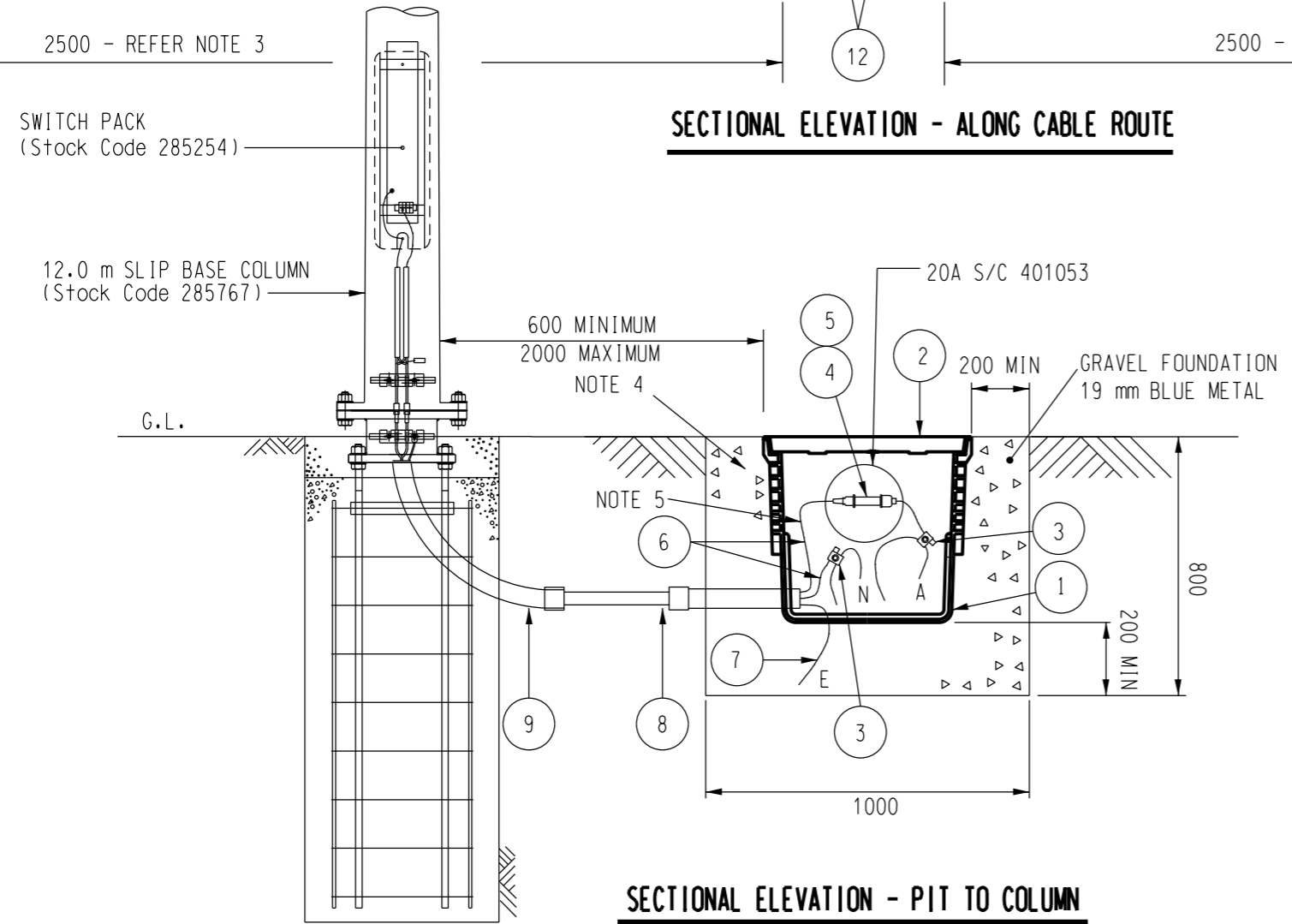


SECTIONAL ELEVATION - ALONG CABLE ROUTE



SECTIONAL ELEVATION - PIT TO COLUMN

NOTES

1. REMOVE SACRIFICIAL SHEATH AND NYLON JACKET FOR A DISTANCE OF 30 mm TO ALLOW INSTALLATION OF PIERCING CONNECTOR ON MAINS CONDUCTOR. DO NOT REMOVE INSULATION FROM EITHER MAINS OR TAP. TIGHTEN CONNECTOR UNTIL SHEAR HEAD BREAKS.
2. CUT HOLES IN PIT AS REQUIRED TO SUIT CABLE AND CONDUIT ENTRIES.
3. CONDUITS ARE TO BE CURVED FROM THE NORMAL CABLE DEPTH (900 mm) TO THE BOTTOM OF THE PIT OVER A DISTANCE OF 2500 mm.
4. AREA AROUND LID MUST BE RIGIDLY SUPPORTED BY MIN 150mm WIDE x 150mm DEEP CONCRETE SURROUND. TOP OF CONCRETE TO BE AT FINAL GROUND LEVEL
5. MIN OF 0.5m OF SPARE CABLE ON EITHER SIDE OF THE SUBMERSIBLE FUSE ITEM 4

REFERENCE DRAWINGS

- S3-1-1-11 - COLUMN, STREET LIGHTING, SLIP BASE, TAPERED STEEL, 12.0 m OUTREACH TYPE.
- S3-1-1-12 - SLIP BASE 12.0 m COLUMN OUTREACH TYPE.
- S3-1-2-4 - RAG BOLT REINFORCEMENT FOUNDATION ARRANGEMENT
- S3-1-2-5 - INSTALLATION DETAILS - MECHANICAL AND ELECTRICAL
- S3-1-5-6 - SWITCH PACK LIGHTING COLUMN INTEGRAL
- S3-1-5-7 - SWITCH PACK WIRING DIAGRAM
- S3-1-5-14 - ELECTRICAL CONNECTION DETAILS, SLIP BASE 12.0 m COLUMN.

TAG No	QTY.	DESCRIPTION	STOCK CODE	DRG REF
12	2	'C' CLAMP 35/35 CONNECTOR	406821	S01-1-5-08
11	AR	CONDUIT - 80mm CATEGORY 'A' PVC	3939	-
10	AR	CABLE - 25sq.mm LV XLPE	9340	-
9	1	BEND - 50mm CATEGORY 'A' PVC	3871	-
8	AR	CONDUIT - 50mm CATEGORY 'A' PVC	3913	-
7	AR	CONDUCTOR - EARTHING - 35mm sq. COPPER	9829	-
6	AR	CABLE - 6mm sq. COPPER DIS	NS1	-
5	1	FUSE HRC 20A - 51x 14 FERRULE	401053	-
4	1	HOLDER - FUSE- SUBMERSIBLE	247742	-
3	2	SUBMERSIBLE PIT PIERCING CONNECTOR 95/35	400918	S4-1-2-15
2	1	COVER - CABLE JOINTING PIT	247767	S3-1-6-1
1	1	PIT - CABLE JOINTING	247759	S3-1-6-1

MATERIAL SCHEDULE

NO	DESCRIPTION	DRN	DATE	CKD	APPD
7	MIN CABLE LENGTH ADDED	J.C.	06'10	A.T.	S.C.
6	POLE TO PIT MAXIMUM ADDED	C.M.	03'10	A.T.	S.C.
5	ITEM 12 CHANGED TO 35/35 CONNECTOR	A.B.	JUL'09	A.T.	S.C.
4	S/C ITEM 3 CHANGED	J.C.	MAR'09	A.T.	S.C.
3	CONCRETE LID SURROUND	J.C.	SEP'07	B.C.	B.C.
2	ITEM 5 CHANGED FROM 15A TO 20A	K.I.	DEC'04	C.C.	-



DES	M. BOCK	POWER STANDARD DRAWING		
DRN	J. LIVESLY	COLUMN, TAPERED STEEL, 12.0m, OUTREACH TYPE		
CKD	M. BOCK	SLIP-BASE MOUNTED SERVICE PIT/POLE BASE		
APPD	F. ROBSON	INSTALLATION AND CONNECTION DETAILS		
SCALE	NTS	A3	DRAWING NUMBER	S03-1-6-03
ISSUED	FEB'97	DRAWING NUMBER		
ALL DIM. IN mm	DRAWING NUMBER			S03-1-6-03
DRAFTING STANDARD TO A.S.1100		CAD PRODUCT - DO NOT AMMEND MANUALLY		

