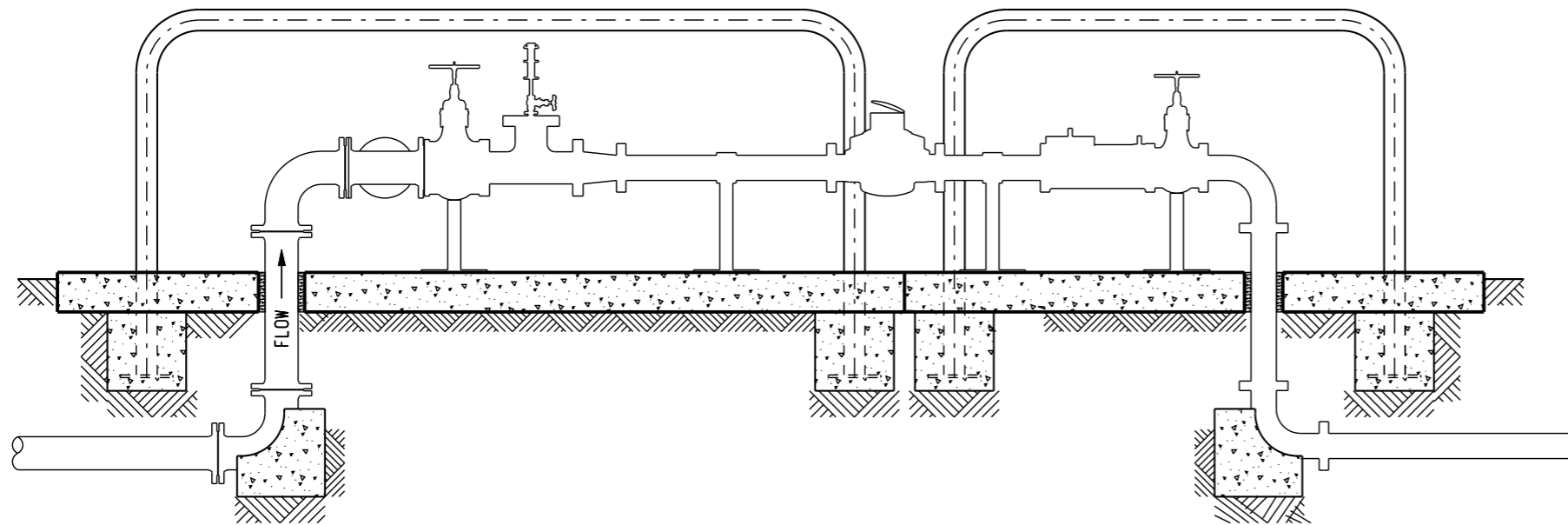


PLAN

GAP IN BOLLARDS AND CONSTRUCTION JOINT IN CONCRETE SLAB TO LINE UP WITH METER



ELEVATION AA

NOTES

1. FIRE HOSE REELS TO BE CONNECTED TO POTABLE (DN40 OR DN50 METERED) SUPPLY.
2. ONLY AUTOMATIC SPRINKLER SYSTEMS TO AS2118 AND/OR HYDRANTS TO AS2419 TO BE CONNECTED TO FIRE SERVICE. OTHERWISE TESTABLE BACKFLOW PREVENTION DEVICE TO BE INSTALLED IN LIEU OF SPRING LOADED SINGLE-CHECK VALVE.
3. WHERE A FIRE SYSTEM IS CONNECTED TO THE PRIVATE MAIN, COMPLY WITH BUILDING CODE OF AUSTRALIA REQUIREMENT AS FOLLOWS:
 A) SECURE VALVE IN THE OPEN POSITION WITH A PADLOCKED METAL STRAP.
 B) PADLOCK SHALL BE OF A TYPE APPROVED BY NTFRS.
 C) SUPPLY PADLOCK KEY TO NTFRS.
 D) ATTACH TO EACH VALVE A NON-FERROUS METAL TAG LABELLED WITH 8mm MINIMUM HEIGHT UPPER CASE WORDING "FIRE SERVICE VALVE - SECURE OPEN - CLOSE ONLY FOR SERVICING".
4. COPPER ALLOY SHALL BE DEZINCIFICATION RESISTANT (DR) TO AS2345.
5. USE SILVER BRAZING ALLOY (MIN 2% SILVER TO AS1167.1 FOR ALL CAPILLARY JOINTING OF COPPER PIPES AND FITTINGS.
6. DUCTILE IRON VALVES AND DUCTILE IRON FITTINGS TO BE INTERNALLY AND EXTERNALLY COATED WITH THERMAL BONDED POLYMER.
7. ISOLATION VALVES SHALL FITTED WITH HANDWHEELS.
8. IF FIRE HOSE REELS OR OTHER FIRE EQUIPMENT IS CONNECTED TO THE POTABLE (DN40 OR DN50 METERED) SUPPLY, THE REQUIREMENTS OF NOTE 3 ABOVE SHALL ALSO APPLY TO VALVES ON THE POTABLE SUPPLY.
9. FOR DETAILS OF APPROVED PRODUCTS USED ON THIS DRAWING, REFER TO THE WATER AND SEWERAGE INFRASTRUCTURE PRODUCTS MANUAL.
10. USE GALVANISED M16 BOLTS (GRADE 4.6 OR GRADE 8.8) WITH GALVANISED WASHERS UNDER BOLT HEAD AND NUT TO FASTEN ABOVE GROUND FLANGES.
11. WHERE APPLICABLE, WRAP BURIED DUCTILE IRON PIPE OR FITTINGS WITH POLYETHYLENE SLEEVING (REFER DRAWINGS W1-2-17A AND W1-2-17B).
12. ON COMPLETION OF WATER SERVICE, FIT BLANK FLANGES TO ISOLATION VALVES.
13. ALL ABOVE GROUND DUCTILE IRON FITTINGS MUST BE EPOXY COATED IN (RILSAN) BLUE.
14. WHERE ROUND AND OTHER-SHAPED FLANGES ARE MIXED, THE GASKET SHALL MATCH THE SHAPED FLANGE.
15. WHEN POURING CONCRETE AGAINST FITTINGS, PLACE GEOTEXTILE FELT (MIN 6mm THICK) BETWEEN FITTING AND CONCRETE TO PREVENT DAMAGETO THE FITTING. JOINTS MUST BE CLEAR OF CONCRETE.
16. IF THE METER ASSEMBLY IS ADJACENT TO A WALL OR PROPERTY BOUNDARY, THE FIRE SERVICE BRANCH AND VALVE SHALL BRANCH IN THE DIRECTION AWAY FROM THE WALL OR PROPERTY BOUNDARY.



| NO | DESCRIPTION | DRN | DATE | CKD | APPD |
|------------|----------------------------|-----|---------|------|------|
| 1 | PROFILE TO MATCH W1-1-17A. | RG1 | JUL '10 | R.J. | R.J. |
| AMENDMENTS | | | | | |



| | | | | |
|-------------------------------|------------|---|-------------------|----------|
| DES | R.JENNINGS | WATER STANDARD DRAWING | | |
| DRN | R.INNES | SERVICES DUAL DN80 / 100 / 150 (FIRE SERVICE) AND METER CONNECTIONS | | |
| CKD | M.SKINNER | | | |
| APPD | J.PUDNEY | | | |
| SCALE | 1:25 | | | |
| ISSUED | NOV'08 | A3 | DRAWING NUMBER | W1-1-19A |
| ALL DIM. | IN mm | | | |
| DRAFTING STANDARD TO A.S.1100 | | CAD PRODUCT - DO NOT AMEND MANUALLY | | AMDT |