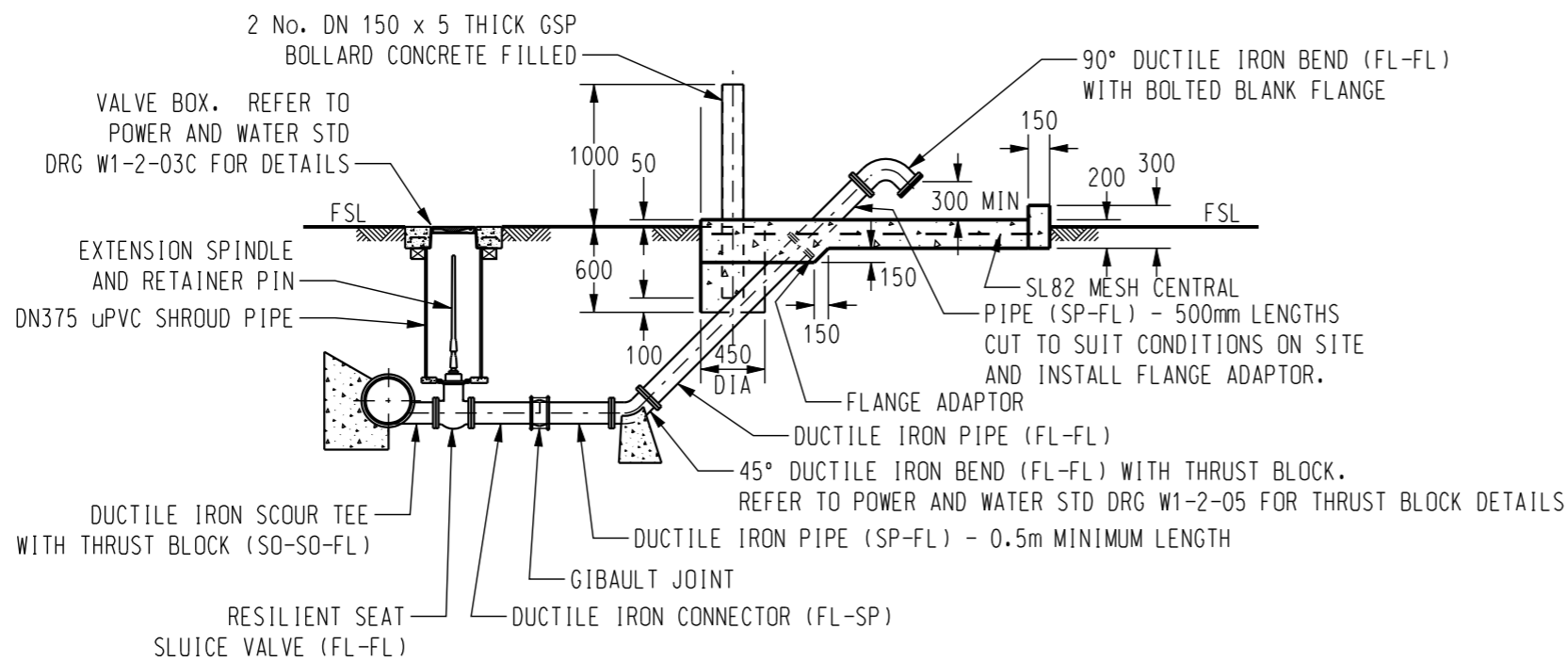


PLAN
(DRAWN WITH DN300 DUCTILE IRON MAIN AND DN150 SCOUR)



ELEVATION

NOTE: OUTLET LOCATION SHALL BE CONFIRMED ON SITE WITH SUPERINTENDENT.

NOTES:

1. ALL DIMENSIONS ARE IN MILLIMETRES UNLESS OTHERWISE SHOWN.
2. USE DN100 OR DN150 PIPE AND FITTINGS AS APPROPRIATE.
3. DUCTILE IRON PIPE AND FITTINGS ON SCOUR TO BE FULLY ENCAPSULATED WITH POLYMERIC COATING.
4. FOR BURIED FLANGED JOINTS, USE STAINLESS STEEL BOLTS (CLASS 50 UP TO PN16, CLASS 70 ABOVE PN16) WITH STAINLESS STEEL WASHERS UNDER BOLT HEAD AND NUT.
5. FLANGE ADAPTOR SHOWN ON SCOUR PIPE TO ASSIST CONSTRUCTION. FLANGED PIPE OF APPROPRIATE LENGTH (AND WITHOUT FLANGE ADAPTOR) CAN BE USED BETWEEN BENDS AS ALTERNATIVE.
6. LOCATION OF BOLLARDS CAN BE ALTERED WITH PWC APPROVAL, TO SUIT SITE REQUIREMENTS.

THIS ASSEMBLY IS NOT TO BE USED FOR SEWERAGE INSTALLATIONS

<p>DRAWING SERVICES telephone: (08) 89857141 Power and Water Corporation NORTHERN TERRITORY</p>	4	SLAB DIMENSIONS CHANGED. NOTES ADDED.	RG1	JUN'10	R.J.	R.J.	<p>PowerWater NORTHERN TERRITORY</p>	DES	R.JENNINGS	WATER STANDARD DRAWING				
	NO	DESCRIPTION	DRN	DATE	CKD	APPD		DRN	R.INNES	WATER MAINLAYING DN100 AND DN150 SCOUR VALVE ASSEMBLY				
AMENDMENTS								CKD	R.JENNINGS	SCALE	1:50	A3	DRAWING NUMBER W1-2-14	
								APPD	J.PUDNEY	ISSUED	NOV'08			
								ALL DIM.	IN mm					