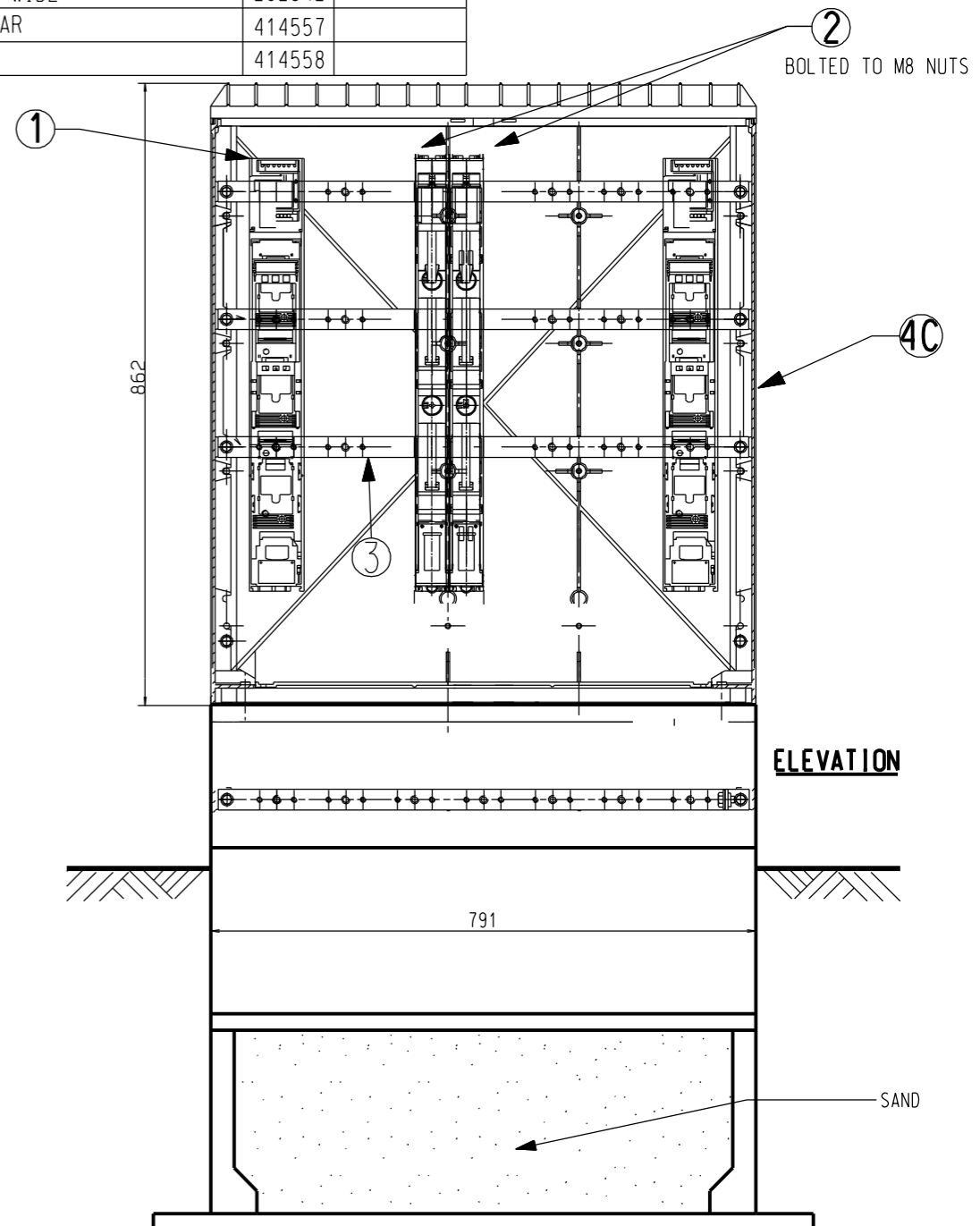
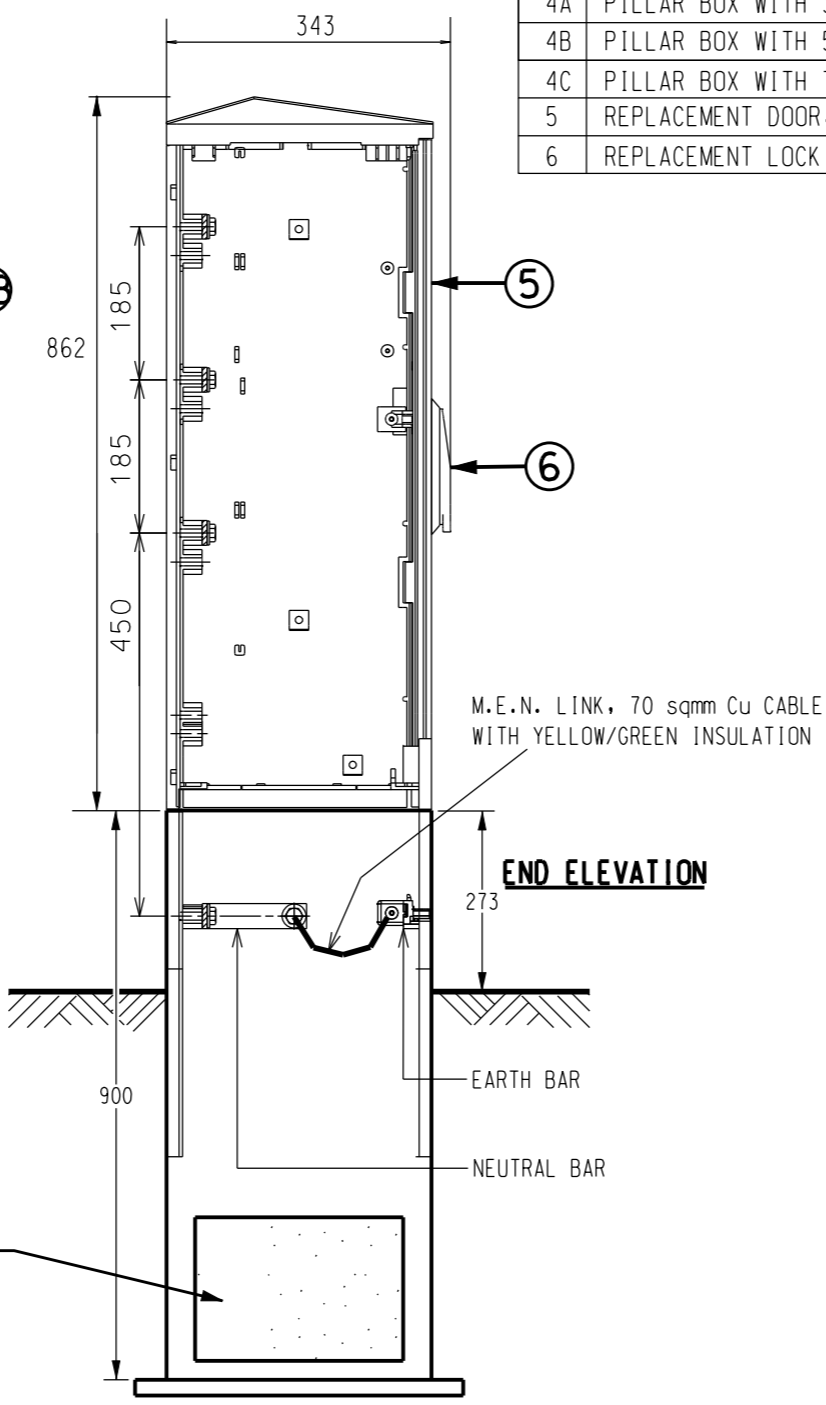
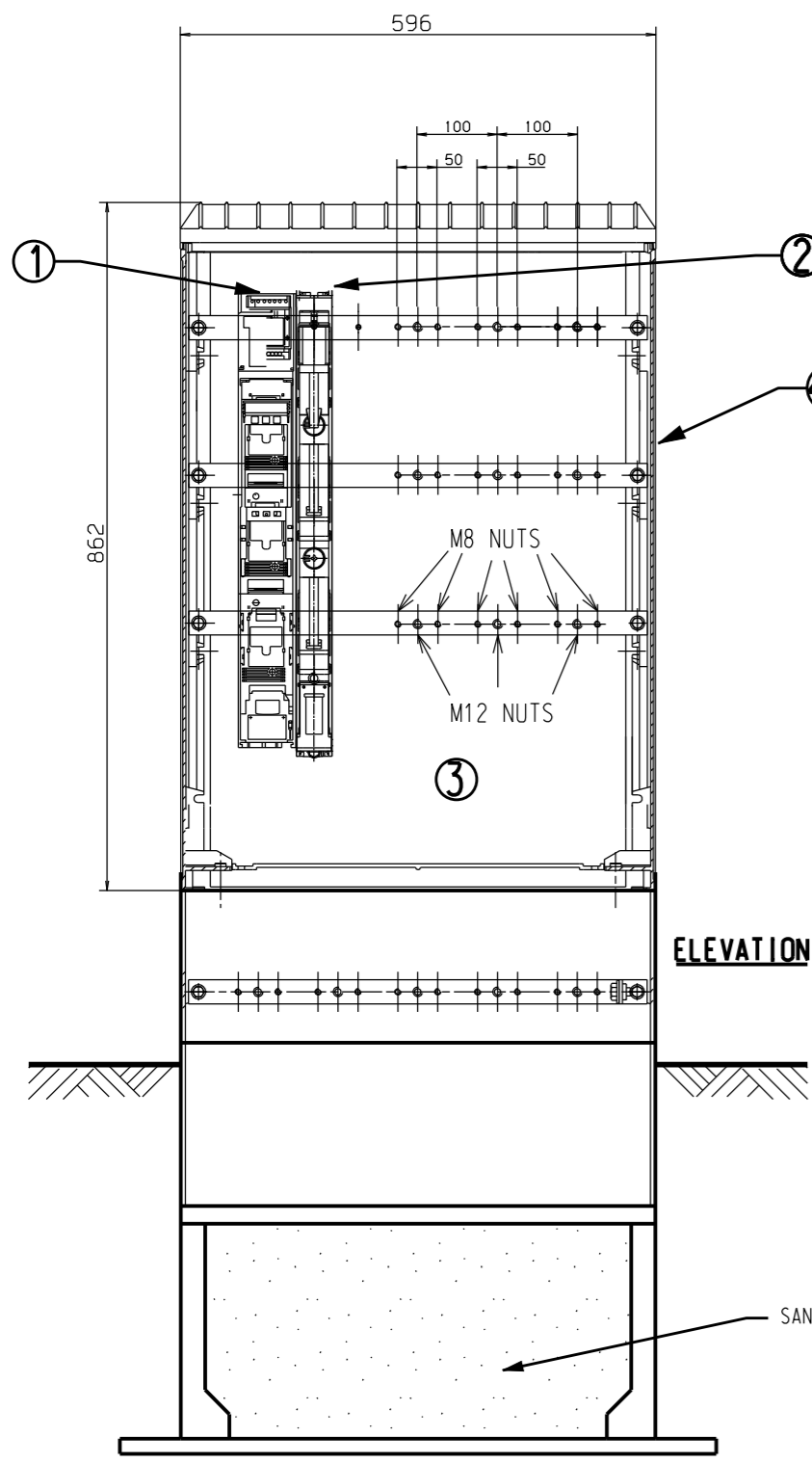


ITEM	S/C	DRG No
1 FUSE SWITCH BASE 630A	11866	S02-1-4-8
2 FUSE SWITCH BASE 160A	407050	S02-1-4-18
3 CLEAR PERSPEX COVER WITH NYLON BOLTS		
4A PILLAR BOX WITH 3 SLOTS - 396 WIDE	292326	
4B PILLAR BOX WITH 5 SLOTS - 596 WIDE	292334	
4C PILLAR BOX WITH 7 SLOTS - 791 WIDE	292342	
5 REPLACEMENT DOOR, 5 SLOT PILLAR	414557	
6 REPLACEMENT LOCKING LEVER	414558	



NO	DESCRIPTION	DRN	DATE	CKD	APPD
7	ITEMS 5 AND 6 ADDED	A.T.	SEP'11	B.C	S.C
6	NOTES MOVED TO SHEET 2, 7 SLOT PILLAR ADDED	C.M.	FEB'10	B.C	S.C
5	NOTE 5 ADDED	J.C.	JUN'09	B.C	S.C
4	STOCK CODES CHANGED	J.C.	NOV'08	B.C	S.C
3	DIMENSIONS ADDED	J.C.	FEB'08	B.C	S.C
2	PILLAR BOX CHANGED	J.C.	OCT'07	B.C	B.C
AMENDMENTS					



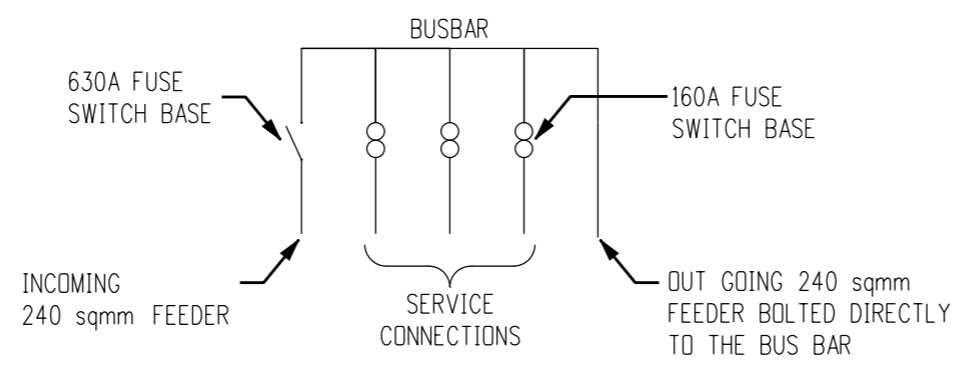
DES		POWER STANDARD DRAWING		
DRN	R. INNES	STRIPLE FUSE PILLAR FRONT OPENING SHEET 1 OF 2		
CKD	-			
APPD	F. ROBSON			
SCALE	NO SCALE	A3	DRAWING NUMBER	S02-2-3-08
ISSUED	APR'01			
ALL DIM. IN mm		CAD PRODUCT - DO NOT AMEND MANUALLY		
DRAFTING STANDARD TO A.S.1100				AMDT 7

NOTES

1. FUSE PILLARS CONSTRUCTED FROM IMPACT RESISTANT, GLASS-FIBRE REINFORCED POLYESTER. EXTRA COATING FOR UV PROTECTION REQUIRED.
2. PADLOCK HASP AND STAPLE PREFERRED.
3. 630A BUS BARS REQUIRED FOR ALL ACTIVE PHASE, NEUTRAL BUS BAR AND EARTH BUS BAR.
4. FOR CONSUMER CONNECTIONS 100 AMP, DIN SIZE 00 STRIPLE FUSES (STOCK CODE 286237) TO BE INSTALLED IN 160AMP STRIPLE FUSE SWITCH BASE
5. ALL BOLT HOLES SHALL HAVE CAPTIVE NUTS FITTED.
6. 630 AMP FUSE SWITCH BASE SHALL BE FITTED WITH SOLID LINKS. (S/C 213116).
7. BUS BAR EXTENSION TO BE USED IF EXTRA NEUTRAL CONNECTION POINTS ARE REQUIRED. REFER ITEM A, FOR BUS BAR EXTENSION.
8. BUS BAR PHASE SEQUENCE, FROM TOP TO BOTTOM, IS RED, WHITE, BLUE, NEUTRAL.
9. IF A NON-OPEN POINT FUSED TERMINATION PILLAR IS SUPPLYING A MAXIMUM OF 1 CUSTOMER PER PHASE, THE INCOMING FEEDER CAN BE A 0.6/1kV/25 sq mm /Cu/XLPE/NYLON/PVC CABLE. OTHERWISE IT SHALL BE THE STANDARD POWER AND WATER LOW VOLTAGE 240 sq mm AL XLPE CABLE.
10. ALL EXPOSED ACTIVE BUS BARS SHALL BE COVERED WITH PERSPEX SHEETING ATTACHED WITH NYLON BOLTS.
11. NEUTRAL AND EARTH BUS BARS SHALL BE THE SAME SIZE AS THE ACTIVE PHASE BUS BARS.
12. REFER TO DRAWINGS S02-2-3-12 FOR STRIPLE FUSE PILLAR EASEMENT DETAILS.
13. SERVICE CABLES SHALL HAVE THEIR DESTINATION LOT TAGGED ON THE CABLE, INCLUDING NEUTRAL, AND HAVE PHASING AND LOT DESTINATION WRITTEN ONTO THE 160AMP FUSE SWITCH BASE. E.G. R:L1234, W:L1235, B:L1236
14. ALL ASSOCIATED EQUIPMENT WITHIN THE PILLAR SHALL BE SUPPLIED AND INSTALLED BY THE PROJECT DEVELOPER AND READY FOR FINAL CONNECTION BY PWC.

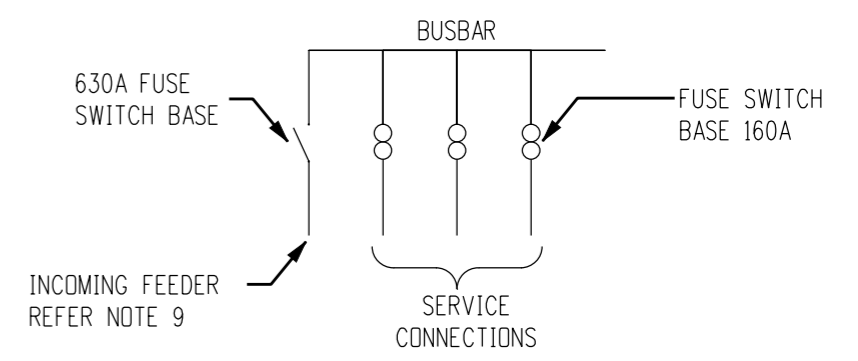
17. ALL CURRENT CARRYING BOLTED CONNECTIONS SHALL BE VIA CLASS 8.8 STAINLESS STEEL BOLTS TO THE FOLLOWING TORQUE SPECIFICATIONS:
 M8: 10-15NM
 M10: 30-35NM
 M12: 35-40NM
 ALL CONNECTIONS SHALL USE A SPRING WASHER BETWEEN A FLAT WASHER AND THE NUT. WHERE CAPTIVE NUTS ARE USED THE SPRING WASHER SHALL BE ON THE BOLT SIDE OF THE CONNECTION.
 ALL STAINLESS STEEL BOLTS REQUIRE A COATING OF ANTI-SEIZE BEFORE INSTALLATION. WHERE MULTIPLE BOLTS ARE USED TO MAKE A CONNECTION, DO NOT APPLY FULL TORQUE TO THE BOLTS ON THE FIRST PASS.

FUSED RESIDENTIAL PILLAR

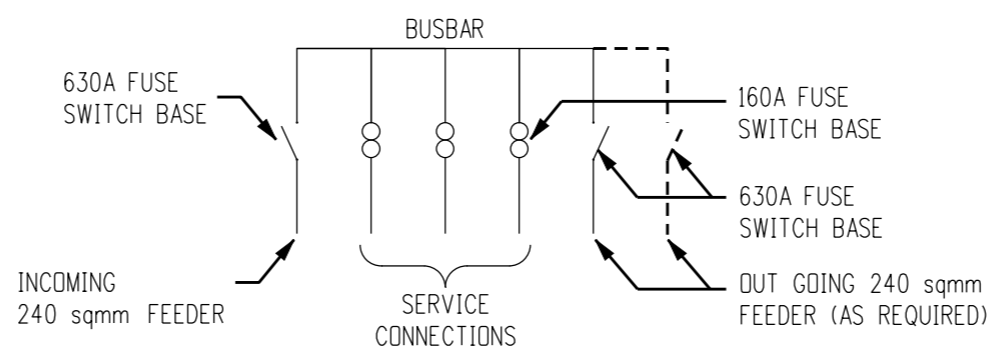


SINGLE LINE DIAGRAM

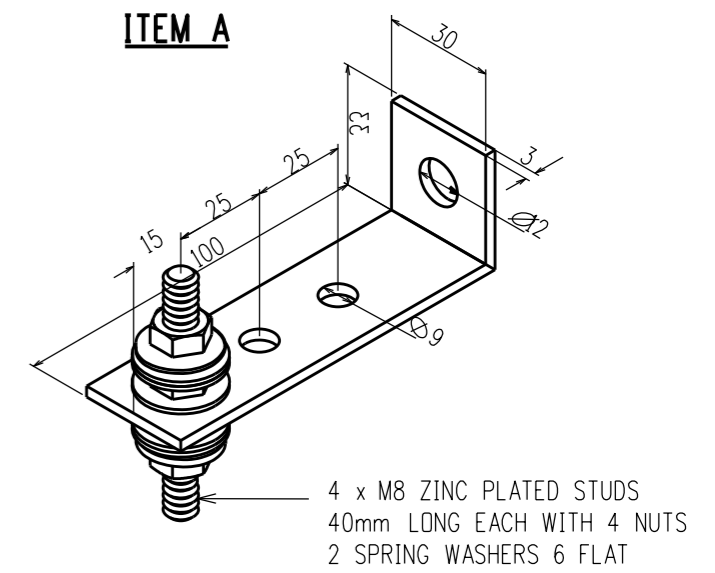
NON-OPEN POINT FUSED TERMINATION PILLAR



3 WAY/LINK/OPEN POINT FUSED PILLAR



ITEM A



9	NOTE 17 ADDED	C.C.	NOV'11	B.C.	S.C
8	NOTE 16 ADDED	A.T.	SEP'11	B.C.	S.C
7	NOTE 15 ADDED	C.C.	DEC'10	A.T.	S.C
6	FUSE SIZE CHANGED	J.C.	JUN'10	B.C	S.C
5	NOTES AND SINGLE LINE DIAGRAM ADDED	C.M.	FEB'10	B.C	S.C
4	NOTE 4 ADDED	J.C.	JUN'08	B.C	S.C
3	STOCK CODES CHANGED	J.C.	NOV'08	B.C	S.C
NO	DESCRIPTION	DRN	DATE	CKD	APPD
AMENDMENTS					



DES	-	POWER STANDARD DRAWING		
DRN	R. INNES	STRIPLE FUSE PILLAR FRONT OPENING SHEET 2 OF 2		
CKD	-			
APPD	F. ROBSON			
SCALE	NO SCALE			
ISSUED	APR'01	A3	DRAWING NUMBER	S02-2-3-08_2
ALL DIM. IN mm				
DRAFTING STANDARD TO A.S.1100		CAD PRODUCT - DO NOT AMEND MANUALLY		