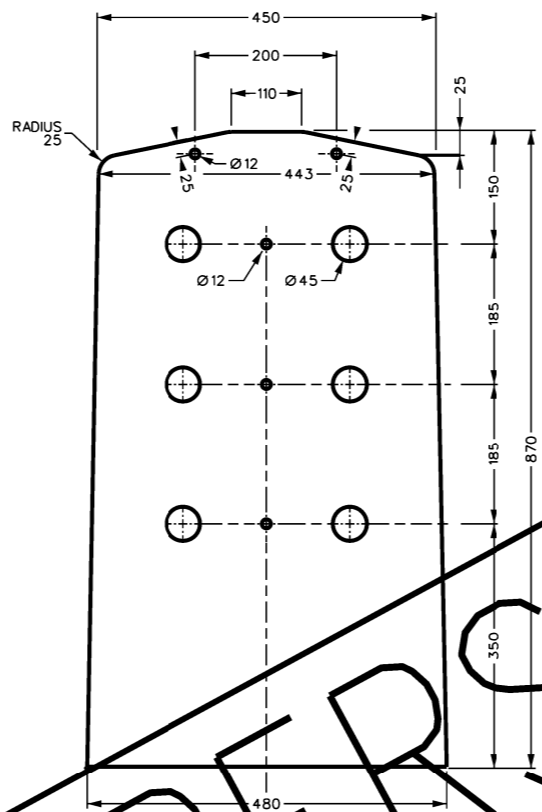
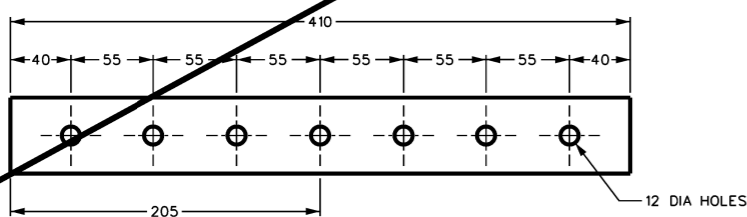


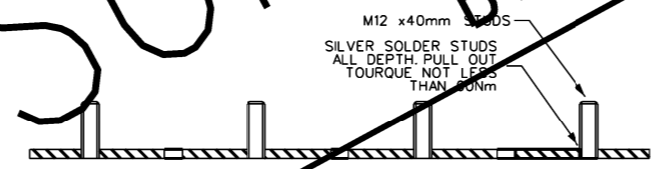
**DETAIL 1**  
SCALE 1:5  
PANEL ASSEMBLY



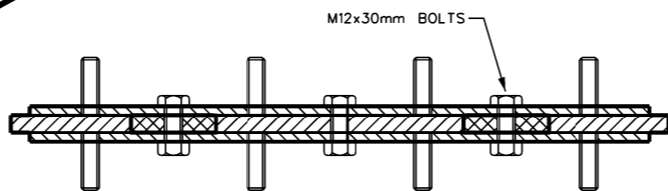
**DETAIL 2**  
SCALE 1:1  
PANEL  
MATERIAL:  
12mm CANVAS BAKELITE



**DETAIL 3**  
SCALE 1:2.5  
BUSBAR SECTION  
410x50x6.3  
COPPER BAR  
6 OFF



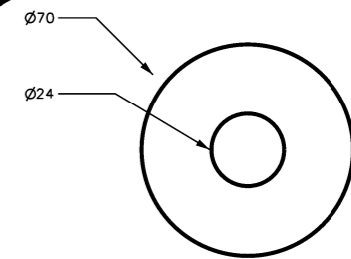
**DETAIL 4**  
SCALE 1:2.5  
STUD FIXINGS TO  
BUSBAR



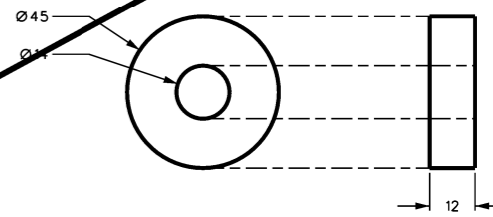
**SECTION A-A**  
SCALE 1:2.5  
BUSBAR & PANEL

**NOTES**

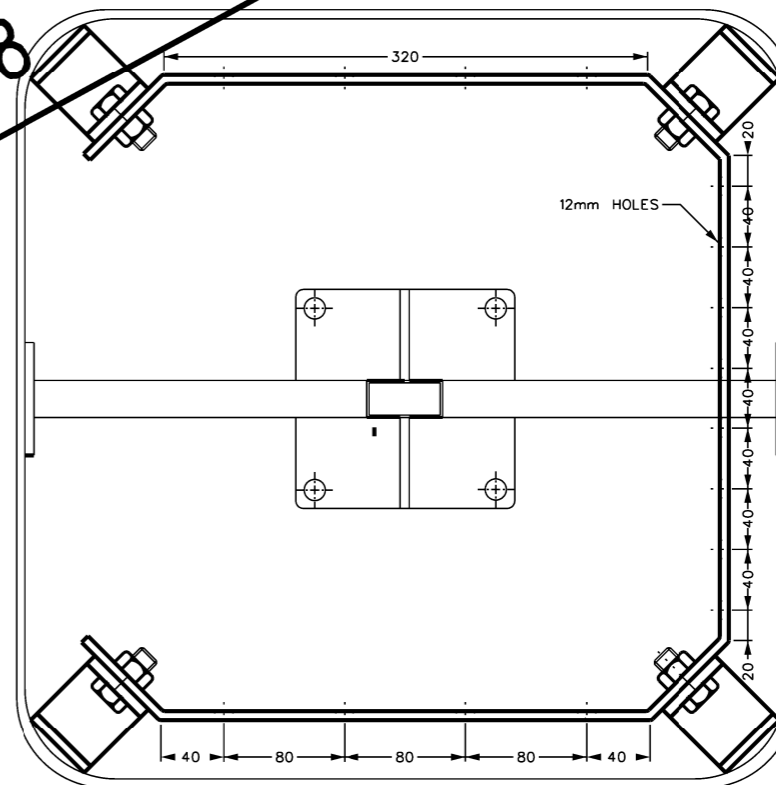
1. Fiberglass cover (stock code 31138) refer to Des. S2-1-3-6. Note grommet for hole in cover not required.
2. All nuts, bolts, studs & washers to be zinc plated.



**COVER SEALS**  
MATERIAL: INSERTION RUBBER  
2mm THICK  
2 OFF  
SCALE 1:1



**COPPER SPACERS**  
6 OFF  
1:1



**NEUTRAL BAR ASSEMBLY**  
SCALE 1:5

SUPERCEDED

BY S02-2-3-08

						DES A. WHYTE DRN N. HORDERN CKD S. SAWYER APPD F. ROBSON SCALE AS SHOWN ISSUED APR '01 ALL DIM. IN mm DRAFTING STANDARD TO A.S.1100		POWER STANDARD DRAWING  <b>FUSED DISTRIBUTION PILLAR          PANEL LAYOUT AND DETAIL</b>		<b>A3</b> DRAWING NUMBER <b>S02-1-3-08</b>	
NO	DESCRIPTION	DRN	DATE	CKD	APPD	CAD PRODUCT - DO NOT AMEND MANUALLY					
1 SUPERCEDED J. C. NOV '10 A. T. S. C.						AMENDMENTS					