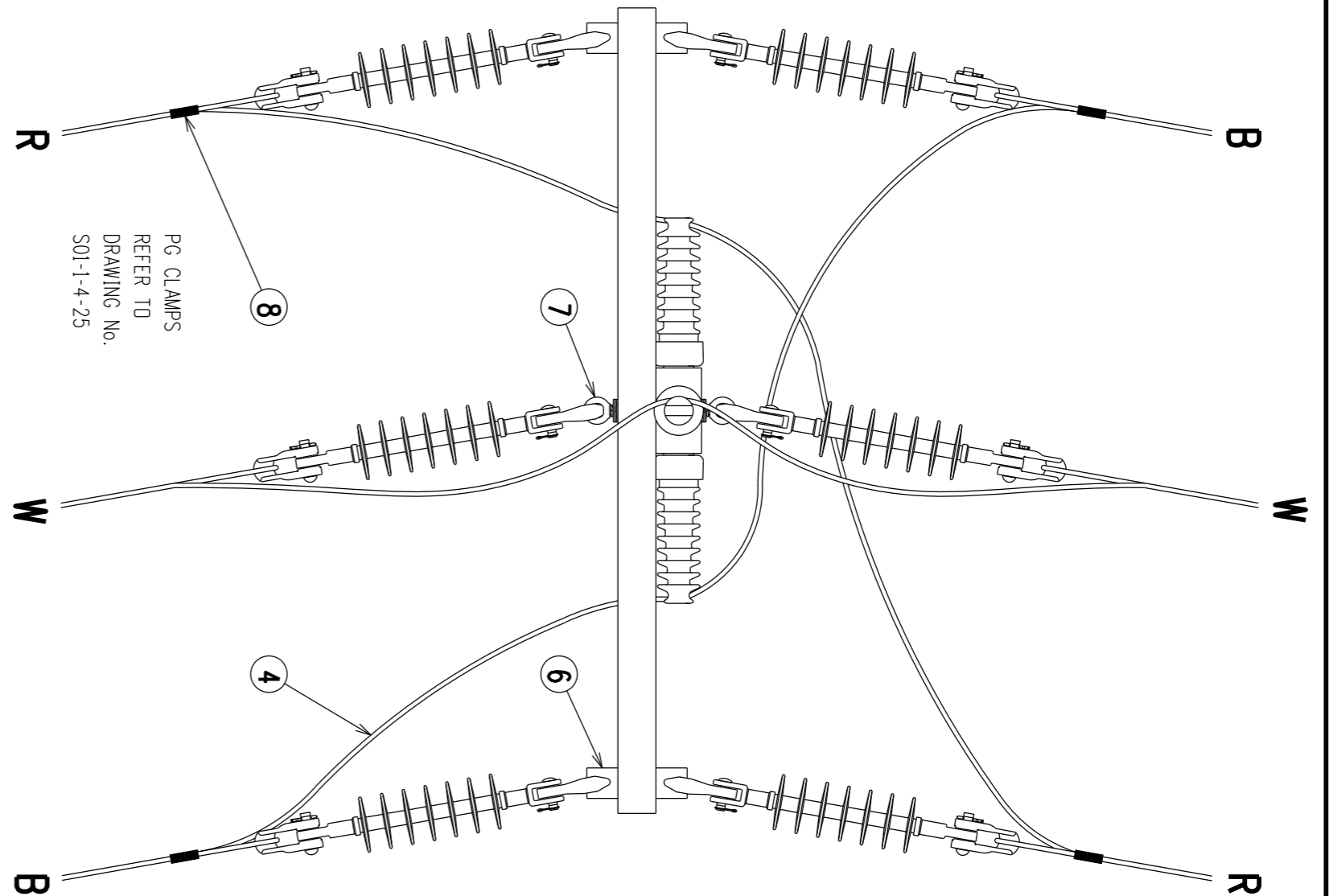


**NOTES :**

- 1. REFER DRAWING No. S01-2-2-40 FOR FURTHER EYE NUT DETAILS.
- 2. PHASE SIGNS TO BE INSTALLED ON BOTH SIDES OF POLE.



PG CLAMPS  
REFER TO  
DRAWING No.  
S01-1-4-25

ITEM	QTY	DESCRIPTION	STOCK CODE	DRG REF
8	4	PG CLAMP	-	S01-1-4-25
7	2	M24 EYE NUT 18kN	298711	S01-1-4-40
6	2	HV SHACKLE STRAP	406938	S01-1-4-37
5	2	ANGLE CROSSARM BRACE	298687	S01-1-4-38
4	AR	OVERHEAD CONDUCTOR	-	-
3	6	STRAIN/SUSPENSION INSULATOR	-	S01-1-3-09
2	3	22kV VERTICAL LINE POST INSULATOR	300467	S01-1-3-10
1	1	CROSSARM HV - FIBERGLASS TERMINATION 125x125	414398	S01-1-2-10
ITEM	QTY	DESCRIPTION	STOCK CODE	DRG REF

MATERIAL SCHEDULE

NO	DESCRIPTION	DRN	DATE	CKD	APPD
1	UPDATED CROSS ARM	C.C.	OCT'11	A.T.	S.C.
0	ISSUED FOR CONSTRUCTION	A.S.	25.10.01	M.B.	F.R.R.
AMENDMENTS					



DES	M. BOCK	POWER STANDARD DRAWING		
DRN	A. SCHMID	<b>POLE TOP UNITS</b>		
CKD	M. BOCK	<b>HV TRANSPOSITION</b>		
APPD	F. ROBSON	<b>FOR UNIVERSAL POLE CONSTRUCTION</b>		
SCALE	1:20 (ON A3)	A3	DRAWING NUMBER	S01-2-2-35
ISSUED	OCT '01			
ALL DIM.	IN mm	DRAWING NUMBER		S01-2-2-35
DRAFTING STANDARD TO A.S.1100		CAD PRODUCT - DO NOT AMEND MANUALLY		AMDT