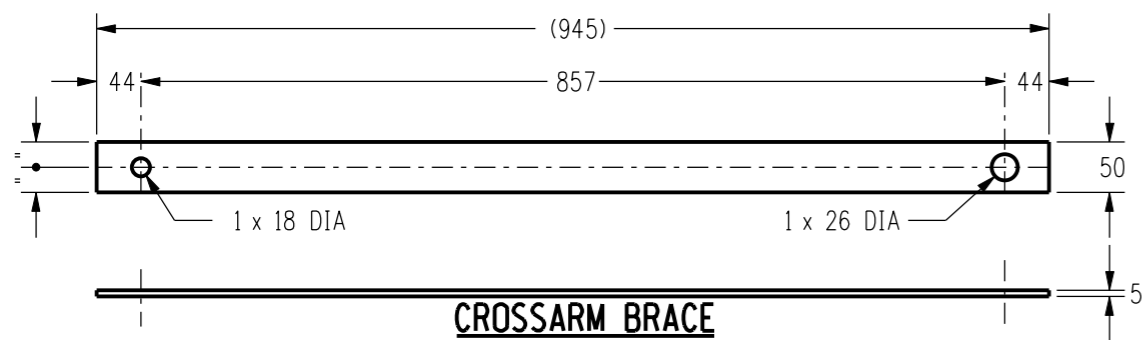
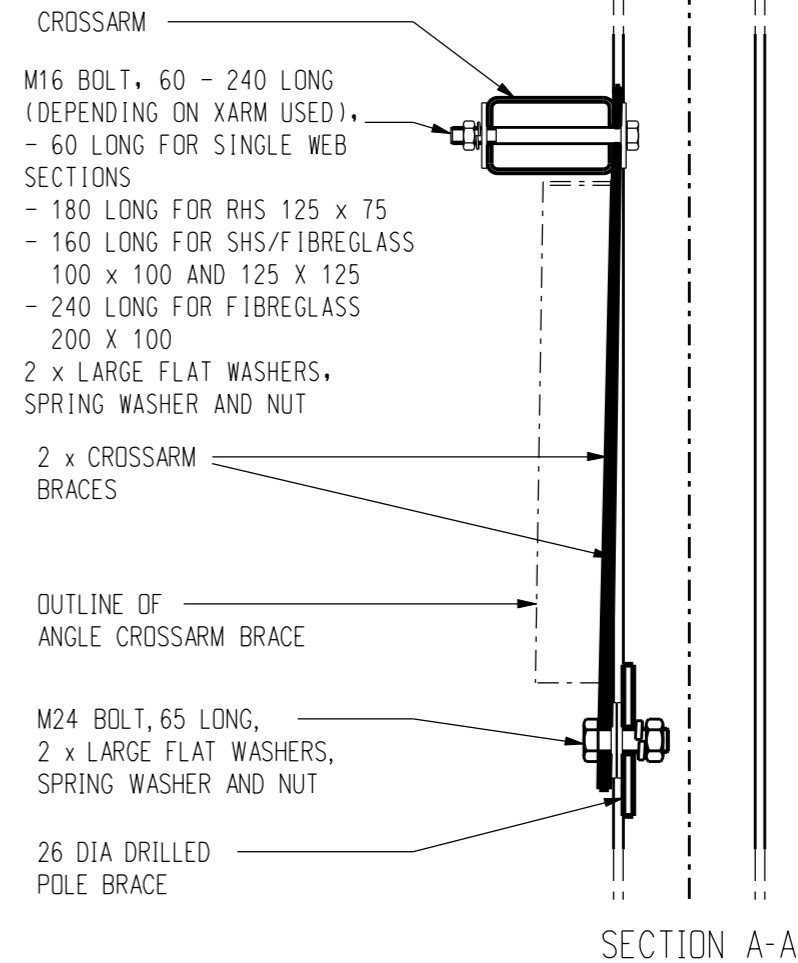
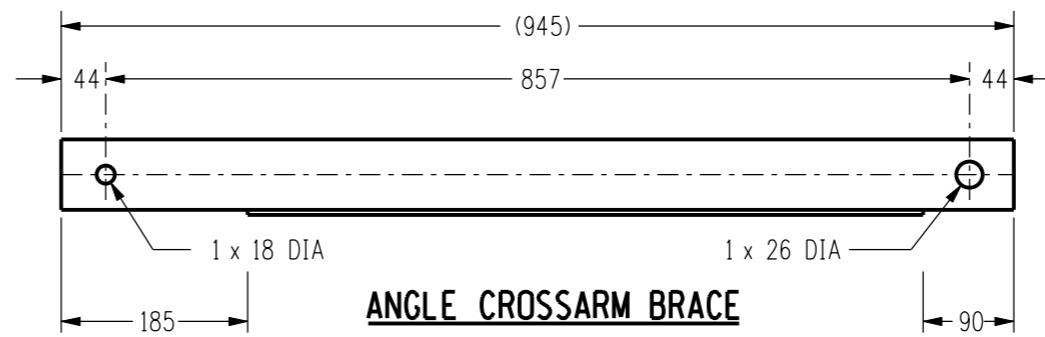


**BRACE CONNECTION DETAIL**



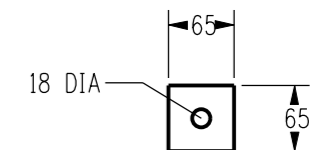
**CROSSARM BRACE**

MATERIAL: 50 x 5 CF  
 DURAGAL STOCK CODE: 298687  
 HOT DIPPED GALVANIZED STOCK CODE: 411554



**ANGLE CROSSARM BRACE**

MATERIAL: 75 x 75 x 5 CA  
 DURAGAL STOCK CODE: 400815  
 HOT DIPPED GALVANIZED STOCK CODE: 411547



**LARGE FLAT WASHER (M16)**

MATERIAL: 5 PLATE GALVANISED  
 STOCK CODE: 298695

NO	DESCRIPTION	DRN	DATE	CKD	APPD
5	HOT DIPPED GALVANIZED ITEMS, M16 BOLT LENGTHS ADDED	A.T.	NOV'11	B.C.	S.C.
4	DWG. No. CHANGED FROM S1-1-4-38 TO S1-2-1-38 AND TITTLE CHANGED FROM LINE HARDWARE TO ASSEMBLIES	A.S.	07.01.04	R.C.	M.B.
3	WEB CUT-BACK ON ANGLE BRACE CHANGED FROM 150 TO 185	A.S.	07.01.04	M.B.	M.B.
2	ANGLE CROSSARM BRACE STOCK CODE ADDED	A.S.	4.10.02	M.B.	M.B.
1	ANGLE CROSSARM BRACE ADDED	A.S.	16.10.01	M.B.	F.R.R.
NO	DESCRIPTION	DRN	DATE	CKD	APPD
AMENDMENTS					

**PowerWater**  
 NORTHERN TERRITORY

DES M. BOCK  
 DRN R. INNES  
 CKD M. BOCK  
 APPD F. ROBSON  
 SCALE JULY'00  
 ISSUED 1:7.5  
 ALL DIM. IN mm  
 DRAFTING STANDARD TO A.S.1100

POWER STANDARD DRAWING

**ASSEMBLIES  
 CROSSARM BRACES AND DETAILS  
 FOR UNIVERSAL POLE CONSTRUCTION**

A3 DRAWING NUMBER S01-2-1-49

CAD PRODUCT - DO NOT AMEND MANUALLY

AMDT