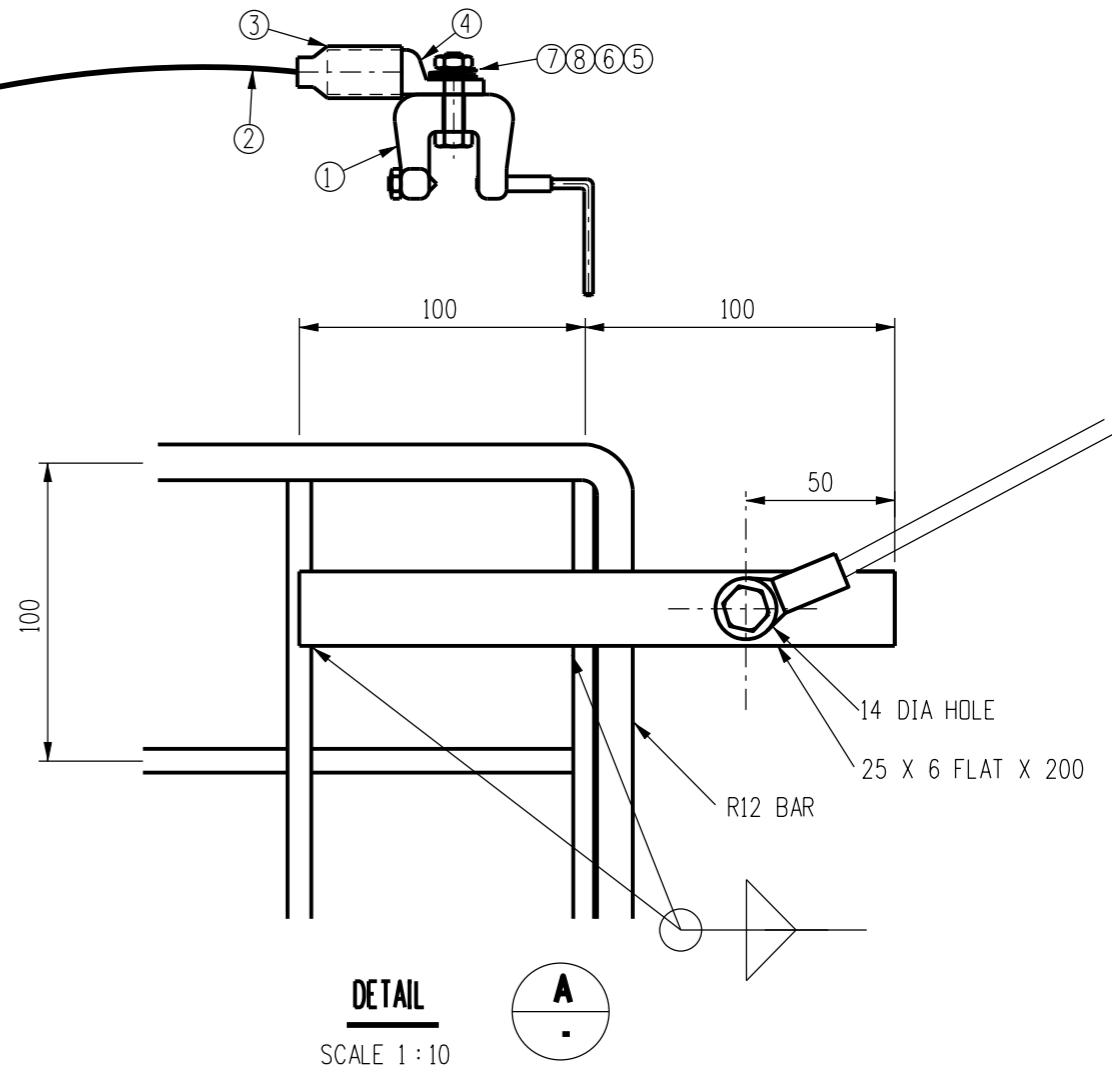


R12 BAR

F81 MESH  
REFER NOTE 1

**EARTH MAT**  
N.T.S.  
STOCK CODE 286823

**NOTES**  
1. EARTH MAT TO BE HOT DIP GALVANISED IN ACCORDANCE WITH PWC STANDARD TECHNICAL SPECIFICATION STS 029.  
2. DATA AND INFORMATION EXTRACTED FROM DRG S01-1-5-02.



TAG No	QTY.	DESCRIPTION	STOCK CODE	DRG REF
8	2	WASHER, FLAT, 12 mm	400832	-
7	1	M12 X 50 BOLT C/W NUT	114470	-
6	1	WASHER, SPRING M12	239616	-
5	1	NUT M12 NYLOC	-	-
4	1	LUG - 1HOLE PALM, COPPER- 70 sq.mm	5512	S02-1-2-11
3	1	HEAT SHRINK 9-9.5 mm BLACK	4382	-
2	1m	CONDUCTOR - COPPER 70 sq.mm, PVC INSULATED	1578	S02-1-1-23
1	1	CLAMP-POLE	257477	-

DES	F.N.	POWER STANDARD DRAWING	
DRN	J.A.L.	EARTHING PORTABLE EARTH MAT	
CKD	S.C.M.		
APPD	P.J.D.		
SCALE	AS SHOWN	A3	DRAWING NUMBER S01-1-5-07
ISSUED	MAY'95		
ALL DIM. IN	mm	DRAFTING STANDARD TO A.S.1100	
CAD PRODUCT - DO NOT AMEND MANUALLY		AMDT	

NO	DESCRIPTION	DRN	DATE	CKD	APPD
2	STOCK CODE AND DRAWING REFERENCES	C.C.	SEP'11	A.T.	S.C.
1	NOTE 1 AMENDED.	J.A.L.			
AMENDMENTS					

